

FBLN1 RABBIT PAB

Cat.#: S219775

Product Name: Anti-FBLN1 Rabbit Polyclonal Antibody

Synonyms: FBLN, FIBL1

UNIPROT ID: P23142 (Gene Accession - NP_001987)

Background: Fibulin 1 is a secreted glycoprotein that becomes incorporated into a fibrillar extracellular matrix. Calcium-binding is apparently required to mediate its binding to laminin and nidogen. It mediates platelet adhesion via binding fibrinogen. Four splice variants which differ in the 3' end have been identified. Each variant encodes a different isoform, but no functional distinctions have been identified among the four variants.

Immunogen: Synthetic peptide of human FBLN1

Applications: ELISA, IHC

Recommended Dilutions: IHC: Oct-50; ELISA: 1000-2000

Host Species: Rabbit

Clonality: Rabbit Polyclonal

Isotype: Immunogen-specific rabbit IgG

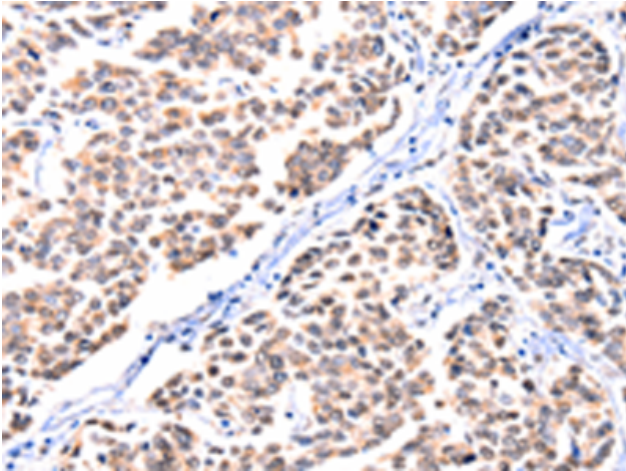
Purification: Antigen affinity purification

Species Reactivity: Human

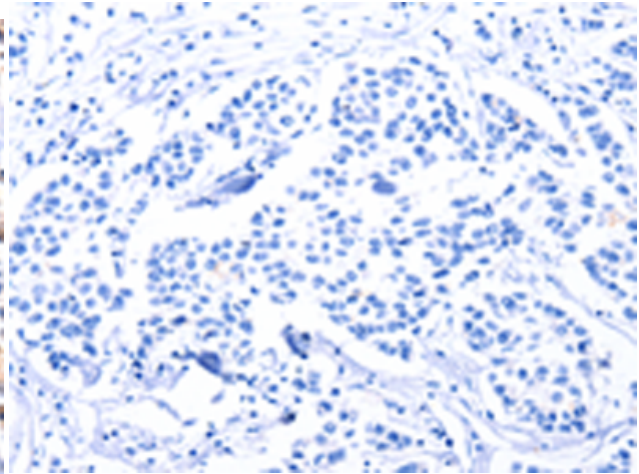
Constituents: PBS (without Mg²⁺ and Ca²⁺), pH 7.4, 150 mM NaCl, 0.05% Sodium Azide and 40% glycerol

Research Areas: Signal Transduction, Cancer, Cardiovascular

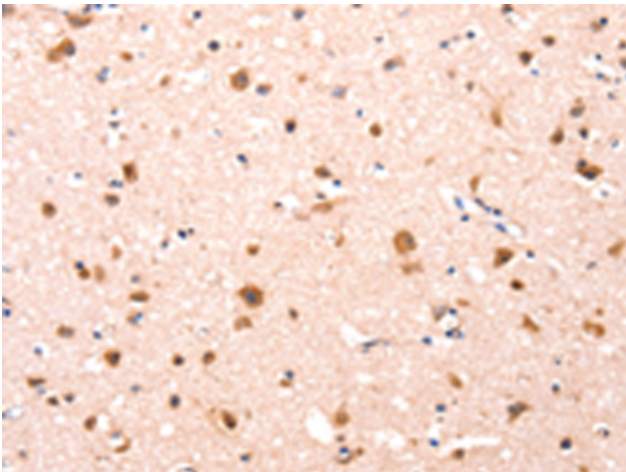
Storage & Shipping: Store at -20°C. Avoid repeated freezing and thawing



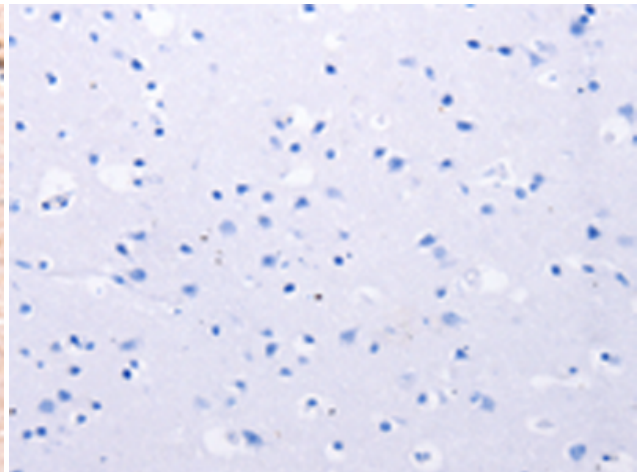
Immunohistochemistry analysis of paraffin embedded Human breast cancer tissue using 219775(FBLN1 Antibody) at a dilution of 1/12(Cytoplasm).



In comparison with the IHC on the left, the same paraffin-embedded Human breast cancer tissue is first treated with the synthetic peptide and then with 219775(Anti-FBLN1 Antibody) at dilution 1/12.



The image on the left is immunohistochemistry of paraffin-embedded Human brain tissue using 219775(Anti-FBLN1 Antibody) at a dilution of 1/12.



In comparison with the IHC on the left, the same paraffin-embedded Human brain tissue is first treated with synthetic peptide and then with D260331(Anti-FBLN1 Antibody) at dilution 1/12.