

FBXW8 RABBIT PAB

Cat.#: S222023

Product Name: Anti-FBXW8 Rabbit Polyclonal Antibody

Synonyms: FBW6; FBW8; FBX29; FBXW6; FBXO29

UNIPROT ID: Q8N3Y1 (Gene Accession - NP_699179)

Background: This gene encodes a member of the F-box protein family, members of which are characterized by an approximately 40 amino acid motif, the F-box. The F-box proteins constitute one of the four subunits of ubiquitin protein ligase complex called SCFs (SKP1-cullin-F-box), which function in phosphorylation-dependent ubiquitination. The F-box proteins are divided into three classes: Fbws containing WD-40 domains, Fbls containing leucine-rich repeats, and Fbxs containing either different protein-protein interaction modules or no recognizable motifs. The protein encoded by this gene contains a WD-40 domain, in addition to an F-box motif, so it belongs to the Fbw class. Alternatively spliced transcript variants encoding distinct isoforms have been identified for this gene.

Immunogen: Synthetic peptide of human FBXW8

Applications: ELISA, IHC

Recommended Dilutions: IHC: 40-200; ELISA: 5000-10000

Host Species: Rabbit

Clonality: Rabbit Polyclonal

Isotype: Immunogen-specific rabbit IgG

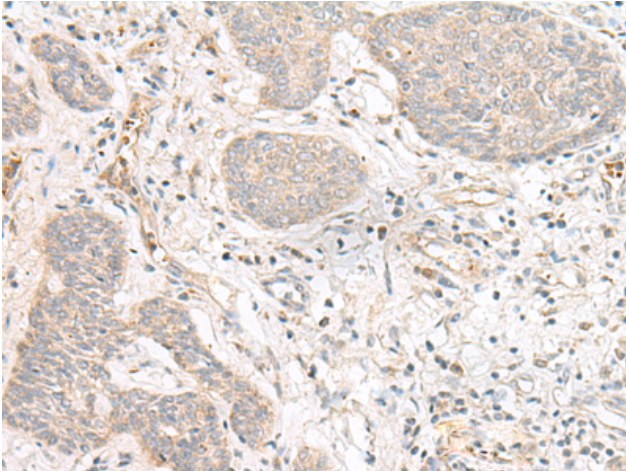
Purification: Antigen affinity purification

Species Reactivity: Human

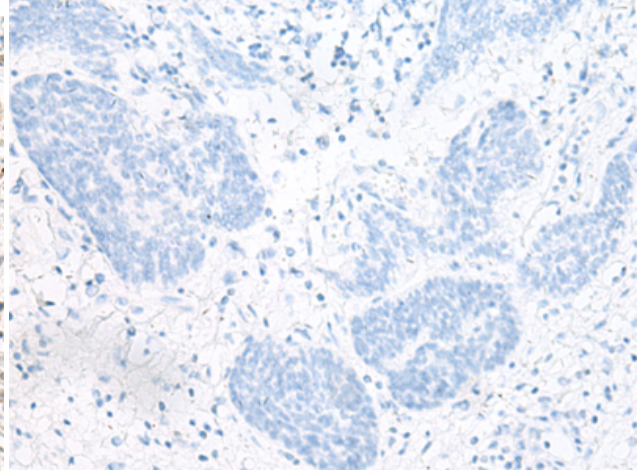
Constituents: PBS (without Mg²⁺ and Ca²⁺), pH 7.4, 150 mM NaCl, 0.05% Sodium Azide and 40% glycerol

Research Areas: Cell Biology

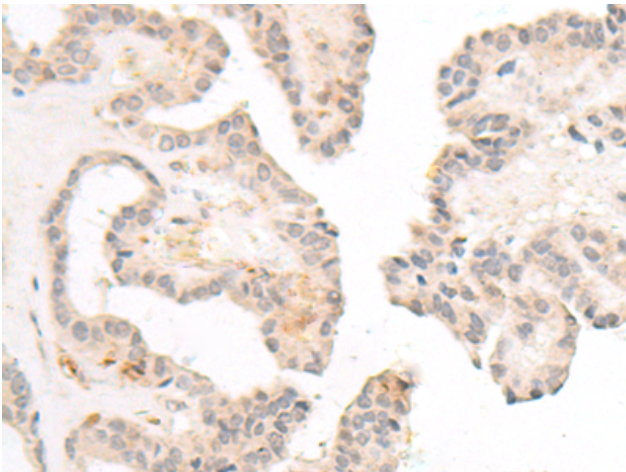
Storage & Shipping: Store at -20°C. Avoid repeated freezing and thawing



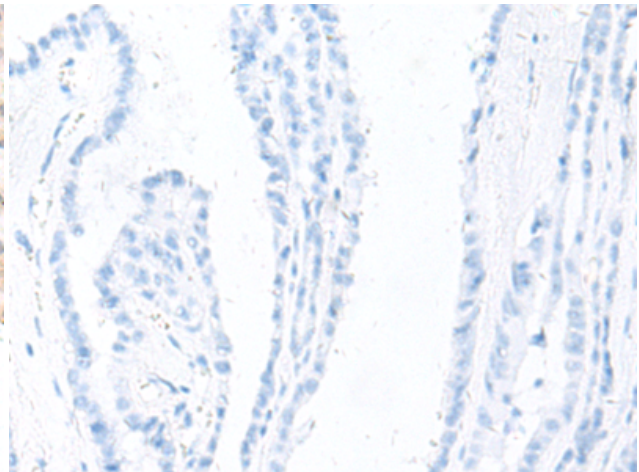
Immunohistochemistry analysis of paraffin embedded Human esophagus cancer tissue using 222023 (FBXW8 Antibody) at a dilution of 1/70 (Cytoplasm or Nucleus).



In comparison with the IHC on the left, the same paraffin-embedded Human esophagus cancer tissue is first treated with the synthetic peptide and then with 222023 (Anti-FBXW8 Antibody) at dilution 1/70.



The image on the left is immunohistochemistry of paraffin-embedded Human thyroid cancer tissue using 222023 (Anti-FBXW8 Antibody) at a dilution of 1/70.



In comparison with the IHC on the left, the same paraffin-embedded Human thyroid cancer tissue is first treated with synthetic peptide and then with D263900 (Anti-FBXW8 Antibody) at dilution 1/70.