

FCGR1A RABBIT MAB

Cat.#: N262213

Product Name: Anti-FCGR1A Rabbit Monoclonal Antibody

Synonyms: Fc-gamma RI; FcRI; Fc-gamma RIA; FcgammaRIa; CD64

UNIPROT ID: P12314

Background: High affinity receptor for the Fc region of immunoglobulins gamma. Functions in both innate and adaptive immune responses.

Immunogen: A synthetic peptide of human FCGR1A

Applications: WB, ICC/IF, IP

Recommended Dilutions: WB: 1/500-1/1000 IF: 1/50-1/200 IP: 1/20

Host Species: Rabbit

Clonality: Rabbit Monoclonal

Clone ID: R08-6A8

MW: Calculated MW: 43 kDa; Observed MW: 43-80 kDa

Isotype: IgG

Purification: Affinity Purified

Species Reactivity: Human

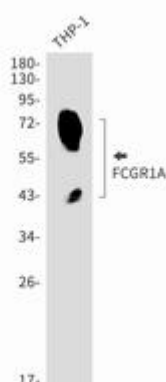
Conjugation: Unconjugated

Modification: Unmodified

Constituents: PBS (without Mg²⁺ and Ca²⁺), pH 7.3 containing 50% glycerol, 0.5% BSA and 0.02% sodium azide

Research Areas: Immunology

Storage & Shipping: Store at -20°C. Avoid repeated freezing and thawing



Western blot analysis of FCGR1A in THP-1 lysates using FCGR1A antibody.