

FCSK RABBIT PAB

Cat.#: S219448

Product Name: Anti-FCSK Rabbit Polyclonal Antibody

Synonyms: FUK; I110046B12Rik

UNIPROT ID: Q8NOW3 (Gene Accession - BC032542)

Background: The protein encoded by this gene belongs to the GHMP (galacto-, homoserine, mevalonate and phosphomevalonate) kinase family and catalyzes the phosphorylation of L-fucose to form beta-L-fucose 1-phosphate. This enzyme catalyzes the first step in the utilization of free L-fucose in glycoprotein and glycolipid synthesis. L-fucose may be important in mediating a number of cell-cell interactions such as blood group antigen recognition, inflammation, and metastasis. While several transcript variants may exist for this gene, the full-length nature of only one has been described to date. [provided by RefSeq, Jul 2008]

Immunogen: Fusion protein of human FCSK

Applications: ELISA, IHC

Recommended Dilutions: IHC: 150-300; ELISA: 5000-10000

Host Species: Rabbit

Clonality: Rabbit Polyclonal

Isotype: Immunogen-specific rabbit IgG

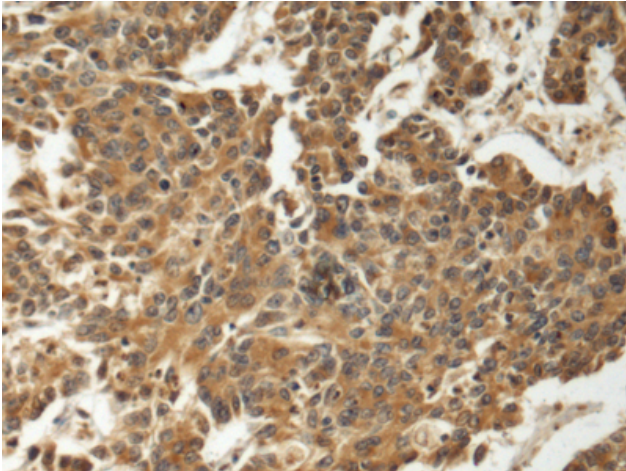
Purification: Antigen affinity purification

Species Reactivity: Human, Mouse

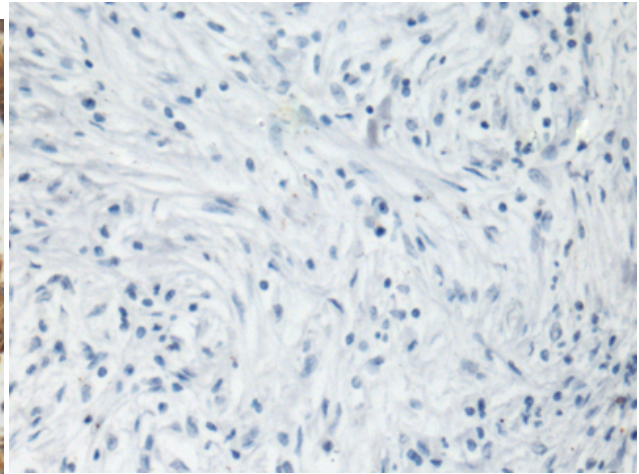
Constituents: PBS (without Mg²⁺ and Ca²⁺), pH 7.4, 150 mM NaCl, 0.05% Sodium Azide and 40% glycerol

Research Areas: Signal Transduction

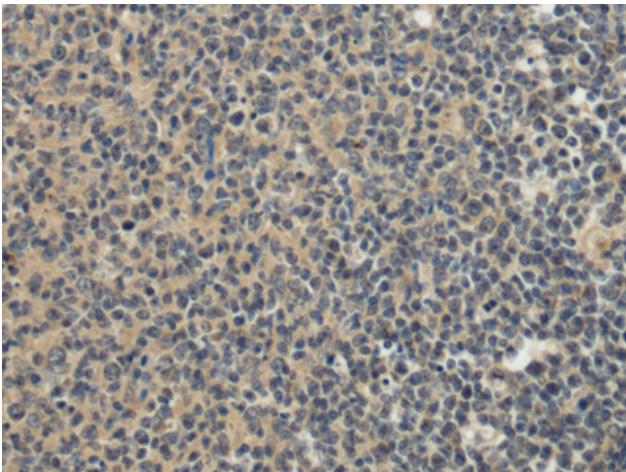
Storage & Shipping: Store at -20°C. Avoid repeated freezing and thawing



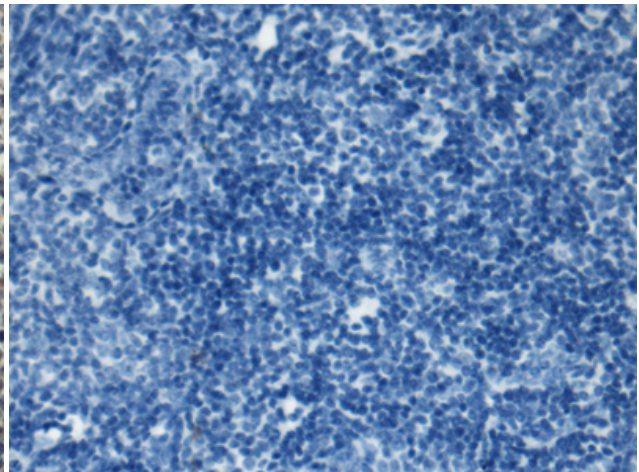
Immunohistochemistry analysis of paraffin embedded Human colorectal cancer tissue using 219448(FCSK Antibody) at a dilution of 1/140(Cytoplasm).



In comparison with the IHC on the left, the same paraffin-embedded Human colorectal cancer tissue is first treated with the fusion protein and then with 219448(Anti-FCSK Antibody) at dilution 1/140.



The image on the left is immunohistochemistry of paraffin-embedded Human tonsil tissue using 219448(Anti-FCSK Antibody) at a dilution of 1/140.



In comparison with the IHC on the left, the same paraffin-embedded Human tonsil tissue is first treated with fusion protein and then with D227113(Anti-FCSK Antibody) at dilution 1/140.