

FDFT1 RABBIT MAB

Cat.#: N261639

Product Name: Anti-FDFT1 Rabbit Monoclonal Antibody

Synonyms: DGPT; ERG9; FDFT1; SQS; Squalene synthase; SS

UNIPROT ID: P37268

Background: Critical branch point enzyme of isoprenoid biosynthesis that is thought to regulate the flux of isoprene intermediates through the sterol pathway.

Immunogen: Recombinant protein of human FDFT1

Applications: WB, ICC/IF, IP

Recommended Dilutions: WB: 1/500-1/1000 IF: 1/50-1/200 IP: 1/20

Host Species: Rabbit

Clonality: Rabbit Monoclonal

Clone ID: R08-6B1

MW: Calculated MW: 48 kDa; Observed MW: 48 kDa

Isotype: IgG

Purification: Affinity Purified

Species Reactivity: Human, Rat

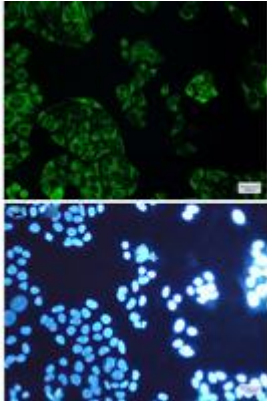
Conjugation: Unconjugated

Modification: Unmodified

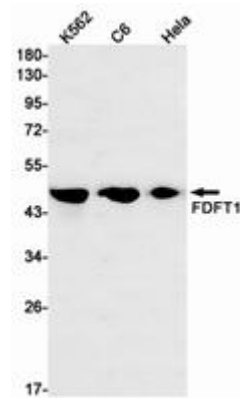
Constituents: PBS (without Mg²⁺ and Ca²⁺), pH 7.3 containing 50% glycerol, 0.5% BSA and 0.02% sodium azide

Research Areas: Cardiovascular

Storage & Shipping: Store at -20°C. Avoid repeated freezing and thawing



Immunocytochemistry analysis of FDFT1 (green) in HeLa using FDFT1 antibody, and DAPI (blue)



Western blot analysis of FDFT1 in K562, C6, HeLa lysates using FDFT1 antibody.