

## FE65 RABBIT MAB

**Cat.#:** N263328

**Product Name:** Anti-FE65 Rabbit Monoclonal Antibody

**Synonyms:** APBB1; Protein Fe65; RIR

**UNIPROT ID:** O00213

**Background:** Transcription coregulator that can have both coactivator and corepressor functions. Adapter protein that forms a transcriptionally active complex with the gamma-secretase-derived amyloid precursor protein (APP) intracellular domain. Plays a central role in the response to DNA damage by translocating to the nucleus and inducing apoptosis.

**Immunogen:** A synthetic peptide of human FE65

**Applications:** WB,IHC-F,IHC-P,ICC/IF

**Recommended Dilutions:** WB: 1/500-1/1000 IHC: 1/50-1/100 IF: 1/50-1/200

**Host Species:** Rabbit

**Clonality:** Rabbit Monoclonal

**Clone ID:** R02-0C4

**MW:** Calculated MW: 77 kDa; Observed MW: 100 kDa

**Isotype:** IgG

**Purification:** Affinity Purified

**Species Reactivity:** Human

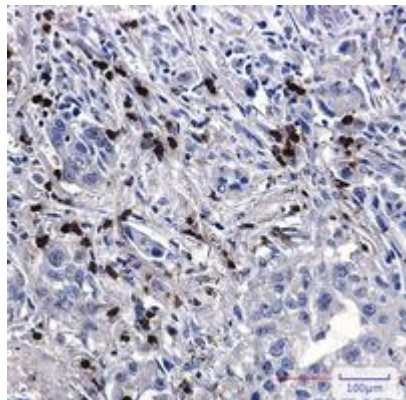
**Conjugation:** Unconjugated

**Modification:** Unmodified

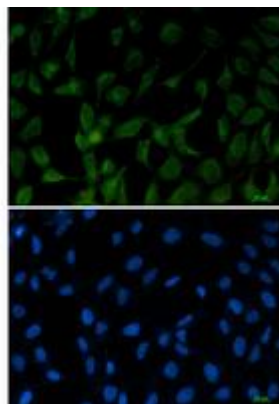
**Constituents:** PBS (without Mg<sup>2+</sup> and Ca<sup>2+</sup>), pH 7.3 containing 50% glycerol, 0.5% BSA and 0.02% sodium azide

**Research Areas:** Neuroscience

**Storage & Shipping:** Store at -20°C. Avoid repeated freezing and thawing



Immunohistochemistry analysis of paraffin-embedded Human lung cancer tissue using FE65 antibody. High-pressure and temperature Sodium Citrate pH 6.0 was used for antigen retrieval.



Immunocytochemistry analysis of FE65 (green) in 293T using FE65 antibody, and DAPI (blue).



Western blot analysis of FE65 in A549, U251 lysates using FE65 antibody.