

FECH RABBIT PAB

Cat.#: S222028

Product Name: Anti-FECH Rabbit Polyclonal Antibody

Synonyms: EPP; FCE

UNIPROT ID: P22830 (Gene Accession - NP_000131)

Background: The protein encoded by this gene is localized to the mitochondrion, where it catalyzes the insertion of the ferrous form of iron into protoporphyrin IX in the heme synthesis pathway. Mutations in this gene are associated with erythropoietic protoporphyria. Two transcript variants encoding different isoforms have been found for this gene. A pseudogene of this gene is found on chromosome 3.

Immunogen: Synthetic peptide of human FECH

Applications: ELISA, WB, IHC

Recommended Dilutions: IHC: 50-300;WB: 500-2000;ELISA: 5000-10000

Host Species: Rabbit

Clonality: Rabbit Polyclonal

Isotype: Immunogen-specific rabbit IgG

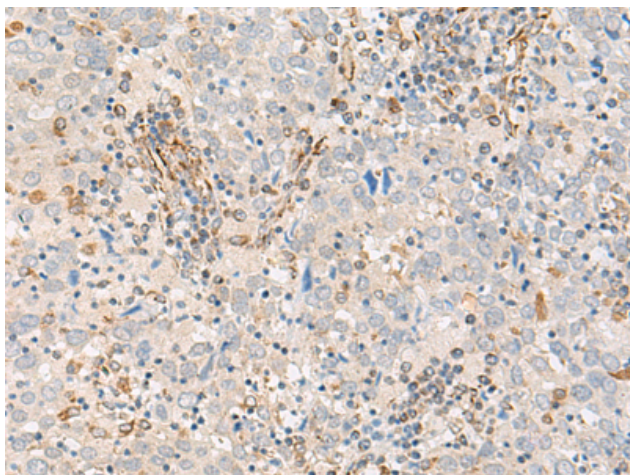
Purification: Antigen affinity purification

Species Reactivity: Human, Mouse

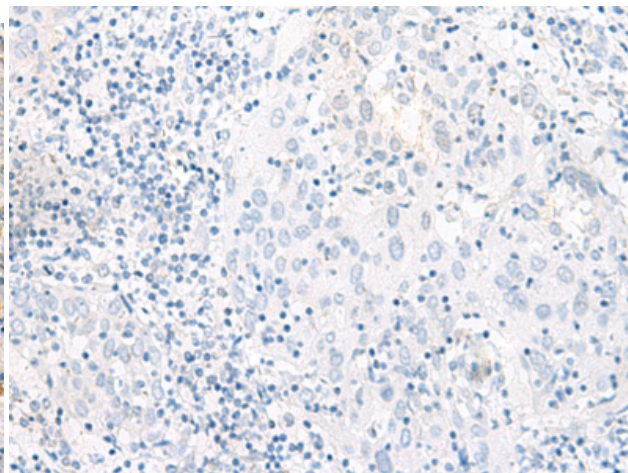
Constituents: PBS (without Mg²⁺ and Ca²⁺), pH 7.4, 150 mM NaCl, 0.05% Sodium Azide and 40% glycerol

Research Areas: Metabolism, Cardiovascular

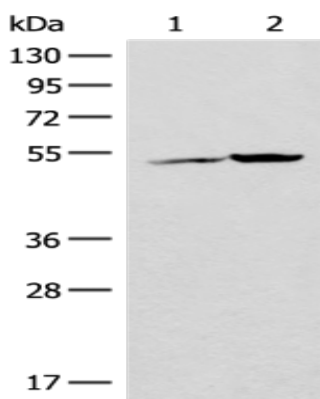
Storage & Shipping: Store at -20°C. Avoid repeated freezing and thawing



Immunohistochemistry analysis of paraffin embedded Human cervical cancer tissue using 222028 (FECH Antibody) at a dilution of 1/55 (Cytoplasm).



In comparison with the IHC on the left, the same paraffin-embedded Human cervical cancer tissue is first treated with the synthetic peptide and then with 222028 (Anti-FECH Antibody) at dilution 1/55.



Gel: 8%SDS-PAGE, Lysate: 40 µg;
 Lane 1-2: K562 cell and Human heart tissue lysates;
 Primary antibody: 222028 (FECH Antibody) at dilution 1/500;
 Secondary antibody: Goat anti rabbit IgG at 1/8000 dilution;
 Exposure time: 20 seconds