

FGFR1 RABBIT PAB

Cat.#: S216510

Product Name: Anti-FGFR1 Rabbit Polyclonal Antibody

Synonyms: CEK; FLG; HH2; OGD; ECCL; FLT2; KAL2; BFGFR; CD331; FGFR; FLT-2; HBGFR; N-SAM; FGFR-1; HRTFDS; bFGF-R-1

UNIPROT ID: P11362 (Gene Accession - BC015035)

Background: The protein encoded by this gene is a member of the fibroblast growth factor receptor (FGFR) family, where amino acid sequence is highly conserved between members and throughout evolution. FGFR family members differ from one another in their ligand affinities and tissue distribution. A full-length representative protein consists of an extracellular region, composed of three immunoglobulin-like domains, a single hydrophobic membrane-spanning segment and a cytoplasmic tyrosine kinase domain. The extracellular portion of the protein interacts with fibroblast growth factors, setting in motion a cascade of downstream signals, ultimately influencing mitogenesis and differentiation. This particular family member binds both acidic and basic fibroblast growth factors and is involved in limb induction. Mutations in this gene have been associated with Pfeiffer syndrome, Jackson-Weiss syndrome, Antley-Bixler syndrome, osteoglophonic dysplasia, and autosomal dominant Kallmann syndrome 2. Chromosomal aberrations involving this gene are associated with stem cell myeloproliferative disorder and stem cell leukemia lymphoma syndrome. Alternatively spliced variants which encode different protein isoforms have been described; however, not all variants have been fully characterized.

Immunogen: Fusion protein of human FGFR1

Applications: ELISA, IHC

Recommended Dilutions: IHC: 50-200; ELISA: 5000-10000

Host Species: Rabbit

Clonality: Rabbit Polyclonal

Isotype: Immunogen-specific rabbit IgG

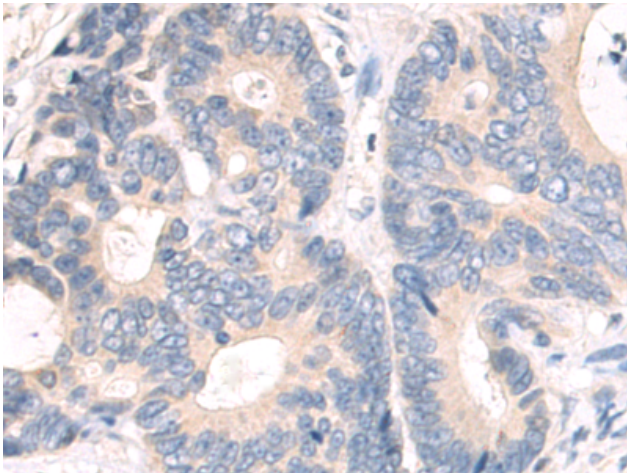
Purification: Antigen affinity purification

Species Reactivity: Human, Mouse, Rat

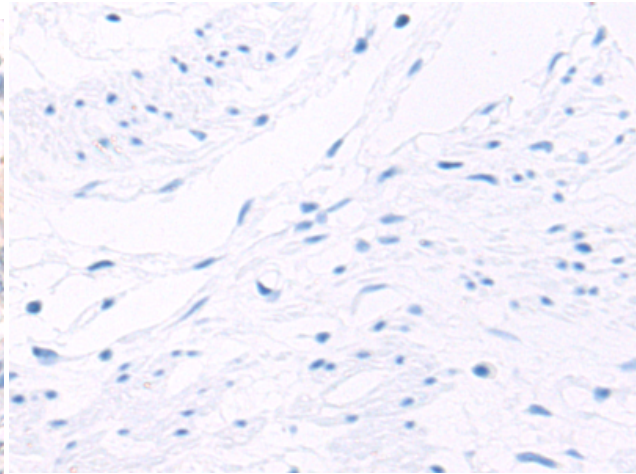
Constituents: PBS (without Mg²⁺ and Ca²⁺), pH 7.4, 150 mM NaCl, 0.05% Sodium Azide and 40% glycerol

Research Areas: Signal Transduction, Cancer, Neuroscience, Cardiovascular

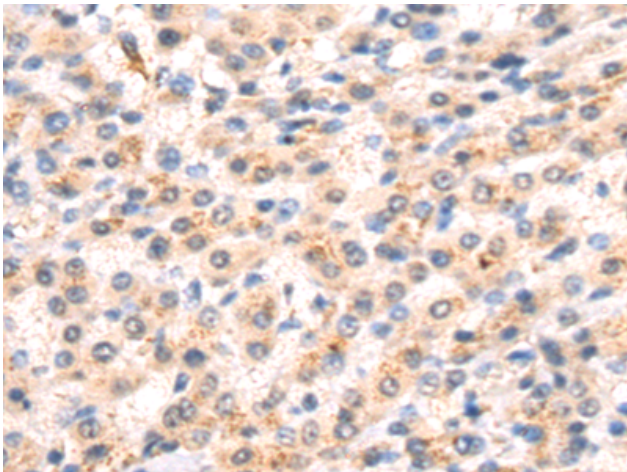
Storage & Shipping: Store at -20°C. Avoid repeated freezing and thawing



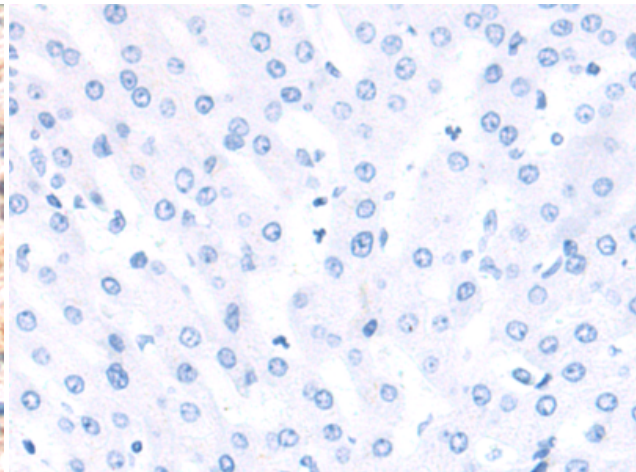
Immunohistochemistry analysis of paraffin-embedded Human colorectal cancer tissue using 216510 (FGFR1 Antibody) at a dilution of 1/80 (Cytoplasm).



In comparison with the IHC on the left, the same paraffin-embedded Human colorectal cancer tissue is first treated with the fusion protein and then with 216510 (Anti-FGFR1 Antibody) at dilution 1/80.



The image on the left is immunohistochemistry of paraffin-embedded Human liver cancer tissue using 216510 (Anti-FGFR1 Antibody) at a dilution of 1/80.



In comparison with the IHC on the left, the same paraffin-embedded Human liver cancer tissue is first treated with fusion protein and then with D220628 (Anti-FGFR1 Antibody) at dilution 1/80.