

FH RABBIT PAB

Cat.#: S217460

Product Name: Anti-FH Rabbit Polyclonal Antibody

Synonyms: MCL; FMRD; HsFH; LRCC; HLRCC; MCUL1

UNIPROT ID: P07954 (Gene Accession - BC003108)

Background: The protein encoded by this gene is an enzymatic component of the tricarboxylic acid (TCA) cycle, or Krebs cycle, and catalyzes the formation of L-malate from fumarate. It exists in both a cytosolic form and an N-terminal extended form, differing only in the translation start site used. The N-terminal extended form is targeted to the mitochondrion, where the removal of the extension generates the same form as in the cytoplasm. It is similar to some thermostable class II fumarases and functions as a homotetramer. Mutations in this gene can cause fumarase deficiency and lead to progressive encephalopathy. [provided by RefSeq, Jul 2008]

Immunogen: Fusion protein of human FH

Applications: ELISA, WB, IHC

Recommended Dilutions: IHC: 50-200;WB: 1000-5000;ELISA: 5000-10000

Host Species: Rabbit

Clonality: Rabbit Polyclonal

Isotype: Immunogen-specific rabbit IgG

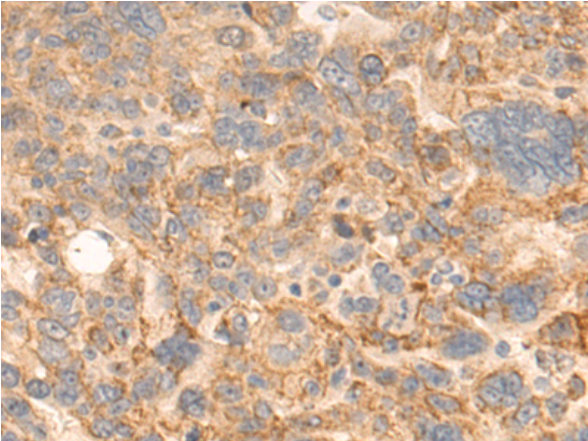
Purification: Antigen affinity purification

Species Reactivity: Human, Mouse, Rat

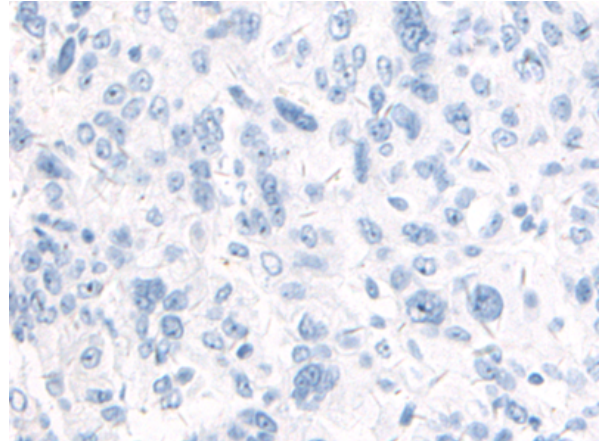
Constituents: PBS (without Mg²⁺ and Ca²⁺), pH 7.4, 150 mM NaCl, 0.05% Sodium Azide and 40% glycerol

Research Areas: Metabolism, Cancer

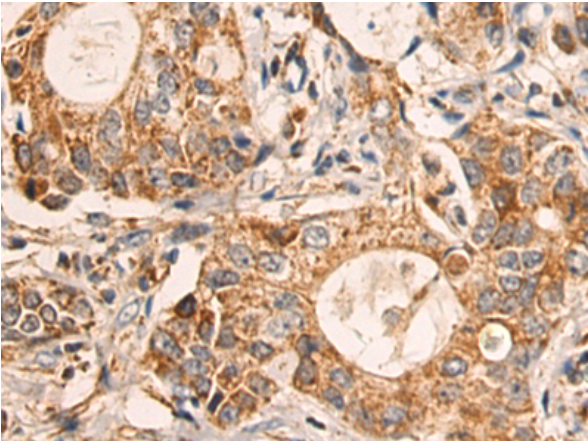
Storage & Shipping: Store at -20°C. Avoid repeated freezing and thawing



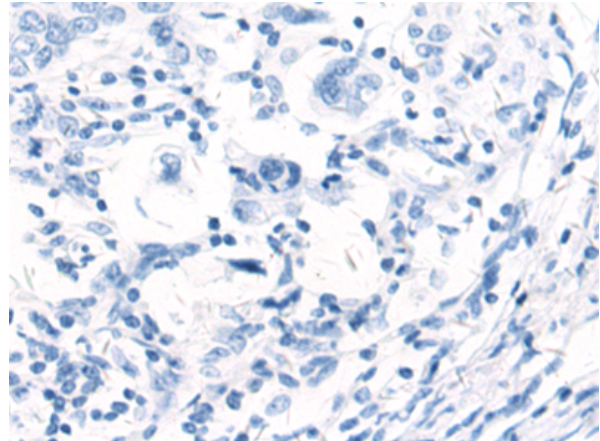
Immunohistochemistry analysis of paraffin embedded Human breast cancer tissue using 217460(FH Antibody) at a dilution of 1/75(Cytoplasm).



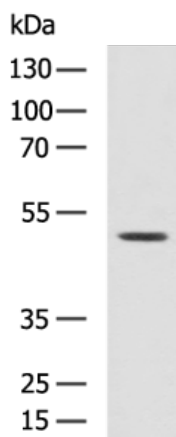
In comparison with the IHC on the left, the same paraffin-embedded Human breast cancer tissue is first treated with the fusion protein and then with 217460(Anti-FH Antibody) at dilution 1/75.



The image on the left is immunohistochemistry of paraffin-embedded Human gastric cancer tissue using 217460(Anti-FH Antibody) at a dilution of 1/75.



In comparison with the IHC on the left, the same paraffin-embedded Human gastric cancer tissue is first treated with fusion protein and then with D222390(Anti-FH Antibody) at dilution 1/75.



Gel: 8%SDS-PAGE, Lysate: 40 µg;
Lane: RAW264.7 cell lysate;
Primary antibody: 217460(FH Antibody) at dilution 1/1150;
Secondary antibody: HRP-conjugated Goat anti rabbit IgG at 1/5000 dilution;
Exposure time: 40 seconds



Product Description

Pioneering GTPase and Oncogene Product Development since 2010
