

## FIBRONECTIN (1E2) MOUSE MAB

**Cat.#:** N261249

**Product Name:** Anti-Fibronectin (1E2) Mouse Monoclonal Antibody

**Synonyms:** FN1; FN; Fibronectin; FN; Cold-insoluble globulin; CIG

**UNIPROT ID:** P02751

**Background:** FN1 Fibronectins bind cell surfaces and various compounds including collagen, fibrin, heparin, DNA, and actin. Fibronectins are involved in cell adhesion, cell motility, opsonization, wound healing, and maintenance of cell shape. Mostly heterodimers or multimers of alternatively spliced variants, connected by 2 disulfide bonds near the carboxyl ends; to a lesser extent homodimers.

**Immunogen:** Synthetic Peptide of Fibronectin

**Applications:** WB,IHC-F,IHC-P,ICC/IF

**Recommended Dilutions:** WB: 1/500-1/1000 IHC: 1/50-1/100 IF: 1/50-1/200

**Host Species:** Mouse

**Clonality:** Mouse Monoclonal

**Clone ID:** 1E2-6G1-3E10

**MW:** Calculated MW: 272 kDa; Observed MW: 285 kDa

**Isotype:** IgG1

**Purification:** Affinity Purified

**Species Reactivity:** Human,Mouse,Rat

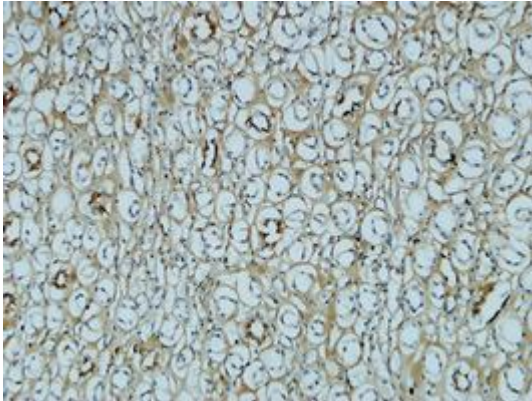
**Conjugation:** Unconjugated

**Modification:** Unmodified

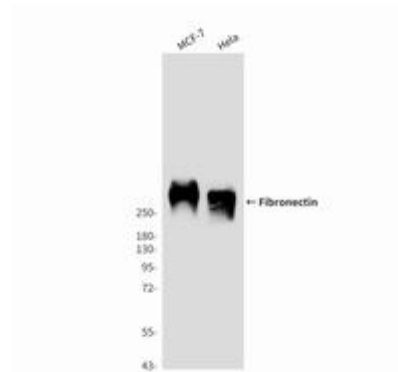
**Constituents:** PBS (without Mg<sup>2+</sup> and Ca<sup>2+</sup>), pH 7.3 containing 50% glycerol, 0.5% BSA and 0.02% sodium azide

**Research Areas:** Cardiovascular

**Storage & Shipping:** Store at -20°C. Avoid repeated freezing and thawing



Immunohistochemistry analysis of paraffin-embedded Human kidney using Fibronectin antibody. High-pressure and temperature Sodium Citrate pH 6.0 was used for antigen retrieval.



Western blot analysis of Fibronectin (1E2) in MCF-7 and HeLa lysates using Fibronectin antibody.