

## FIS1 RABBIT PAB

**Cat.#:** S217452

**Product Name:** Anti-FIS1 Rabbit Polyclonal Antibody

**Synonyms:** TTC11; CGI-135

**UNIPROT ID:** Q9Y3D6 (Gene Accession - BC003540 )

**Background:** The balance between fission and fusion regulates the morphology of mitochondria. TTC11 is a component of a mitochondrial complex that promotes mitochondrial fission (James et al., 2003 [PubMed 12783892]).[supplied by OMIM, Mar 2008]

**Immunogen:** Fusion protein of human FIS1

**Applications:** ELISA, WB, IHC

**Recommended Dilutions:** IHC: 50-200;WB: 1000-5000;ELISA: 5000-10000

**Host Species:** Rabbit

**Clonality:** Rabbit Polyclonal

**Isotype:** Immunogen-specific rabbit IgG

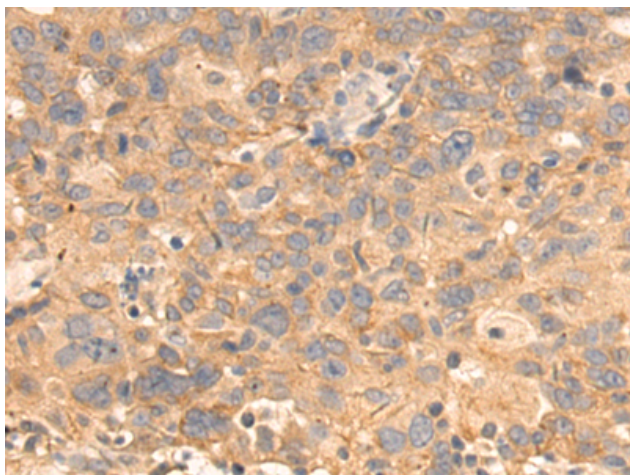
**Purification:** Antigen affinity purification

**Species Reactivity:** Human, Mouse, Rat

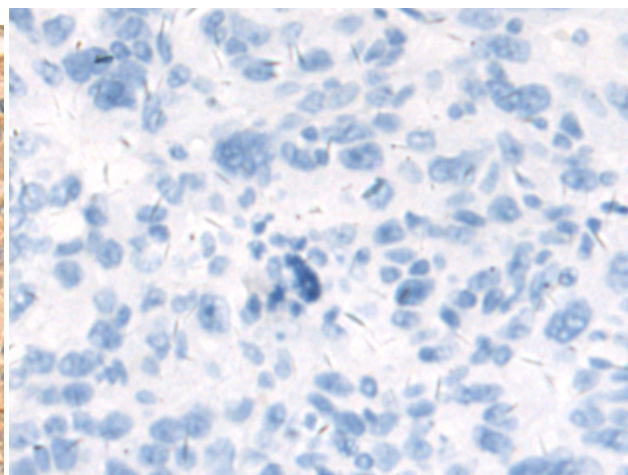
**Constituents:** PBS (without Mg<sup>2+</sup> and Ca<sup>2+</sup>), pH 7.4, 150 mM NaCl, 0.05% Sodium Azide and 40% glycerol

**Research Areas:** Cancer, Metabolism

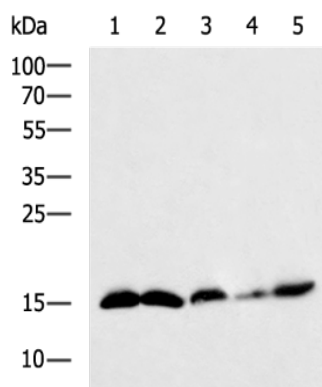
**Storage & Shipping:** Store at -20°C. Avoid repeated freezing and thawing



Immunohistochemistry analysis of paraffin embedded Human breast cancer tissue using 217452(FIS1 Antibody) at a dilution of 1/55(Cytoplasm).



In comparison with the IHC on the left, the same paraffin-embedded Human breast cancer tissue is first treated with the fusion protein and then with 217452(Anti-FIS1 Antibody) at dilution 1/55.



Gel: 12%SDS-PAGE, Lysate: 40 µg;  
 Lane 1-5: Mouse heart tissue, Raji cell, Mouse spleen tissue, Jurkat cell, Hela cell lysates;  
 Primary antibody: 217452(FIS1 Antibody) at dilution 1/1200;  
 Secondary antibody: HRP-conjugated Goat anti rabbit IgG at 1/5000 dilution;  
 Exposure time: 15 seconds