

## FKBP1A RABBIT PAB

**Cat.#:** S218942

**Product Name:** Anti-FKBP1A Rabbit Polyclonal Antibody

**Synonyms:** FKBP1; PKC12; PKC12; FKBP12; PPIASE; FKBP-12; FKBP-1A

**UNIPROT ID:** P62942 (Gene Accession - BC005147 )

**Background:** The protein encoded by this gene is a member of the immunophilin protein family, which play a role in immunoregulation and basic cellular processes involving protein folding and trafficking. The protein is a cis-trans prolyl isomerase that binds the immunosuppressants FK506 and rapamycin. It interacts with several intracellular signal transduction proteins including type I TGF-beta receptor. It also interacts with multiple intracellular calcium release channels, and coordinates multi-protein complex formation of the tetrameric skeletal muscle ryanodine receptor. In mouse, deletion of this homologous gene causes congenital heart disorder known as noncompaction of left ventricular myocardium. Multiple alternatively spliced variants, encoding the same protein, have been identified. The human genome contains five pseudogenes related to this gene, at least one of which is transcribed.

**Immunogen:** Fusion protein of human FKBP1A

**Applications:** ELISA, WB, IHC

**Recommended Dilutions:** IHC: 40-200;WB: 200-1000;ELISA: 5000-10000

**Host Species:** Rabbit

**Clonality:** Rabbit Polyclonal

**Isotype:** Immunogen-specific rabbit IgG

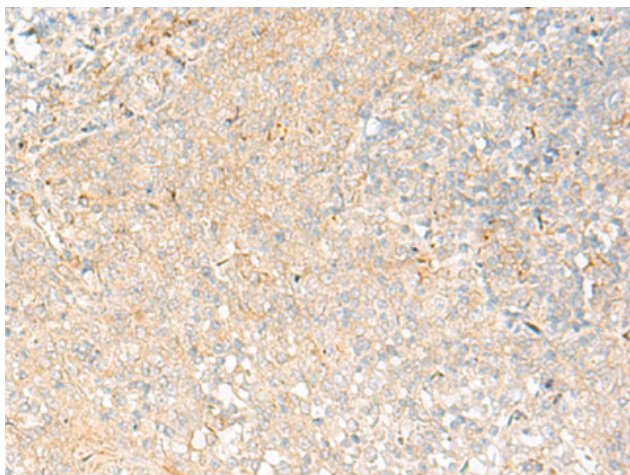
**Purification:** Antigen affinity purification

**Species Reactivity:** Human, Mouse, Rat

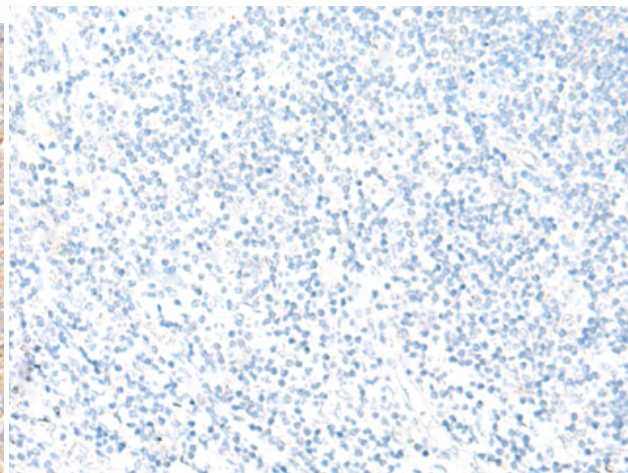
**Constituents:** PBS (without Mg<sup>2+</sup> and Ca<sup>2+</sup>), pH 7.4, 150 mM NaCl, 0.05% Sodium Azide and 40% glycerol

**Research Areas:** Immunology

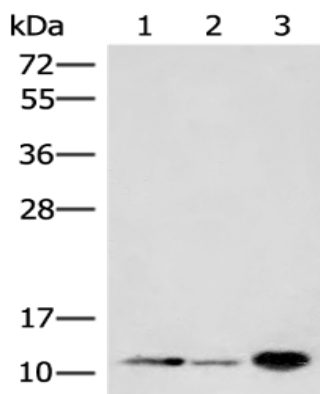
**Storage & Shipping:** Store at -20°C. Avoid repeated freezing and thawing



Immunohistochemistry analysis of paraffin embedded Human tonsil tissue using 218942(FKBP1A Antibody) at a dilution of 1/55(Cytoplasm).



In comparison with the IHC on the left, the same paraffin-embedded Human tonsil tissue is first treated with the fusion protein and then with 218942(Anti-FKBP1A Antibody) at dilution 1/55.



Gel: 12%SDS-PAGE, Lysate: 40  $\mu$ g;  
Lane 1-3: Mouse brain tissue, Human fetal brain tissue and Jurkat cell lysates;  
Primary antibody: 218942(FKBP1A Antibody) at dilution 1/250;  
Secondary antibody: Goat anti rabbit IgG at 1/8000 dilution;  
Exposure time: 2 minutes