

FKBP3 RABBIT PAB

Cat.#: S219418

Product Name: Anti-FKBP3 Rabbit Polyclonal Antibody

Synonyms: FKBP-3; FKBP25; PPIase; FKBP-25

UNIPROT ID: Q00688 (Gene Accession - BC016288)

Background: The protein encoded by this gene is a member of the immunophilin protein family, which play a role in immunoregulation and basic cellular processes involving protein folding and trafficking. This encoded protein is a cis-trans prolyl isomerase that binds the immunosuppressants FK506 and rapamycin, as well as histone deacetylases, the transcription factor YY1, casein kinase II, and nucleolin. It has a higher affinity for rapamycin than for FK506 and thus may be an important target molecule for immunosuppression by rapamycin.

Immunogen: Fusion protein of human FKBP3

Applications: ELISA, WB, IHC

Recommended Dilutions: IHC: 200-300;WB: 1000-5000;ELISA: 5000-10000

Host Species: Rabbit

Clonality: Rabbit Polyclonal

Isotype: Immunogen-specific rabbit IgG

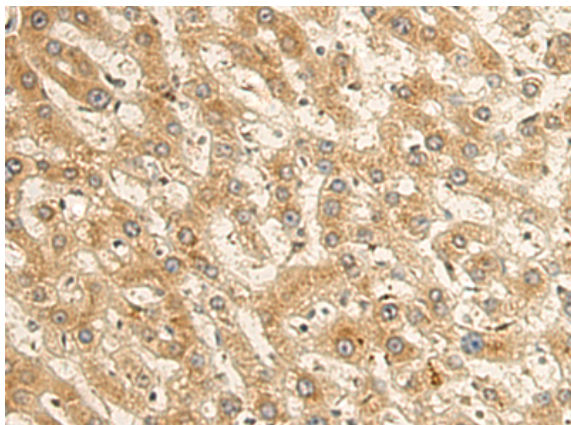
Purification: Antigen affinity purification

Species Reactivity: Human, Mouse

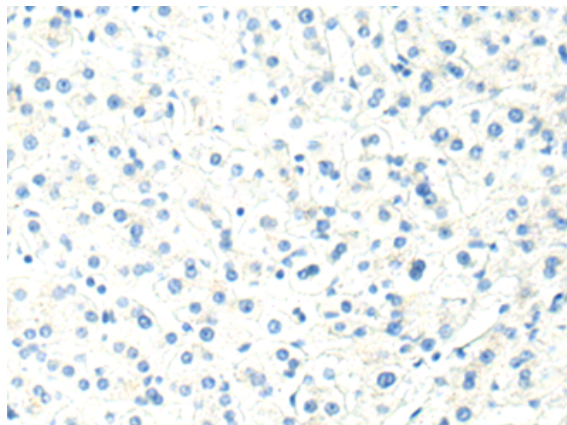
Constituents: PBS (without Mg²⁺ and Ca²⁺), pH 7.4, 150 mM NaCl, 0.05% Sodium Azide and 40% glycerol

Research Areas: Signal Transduction

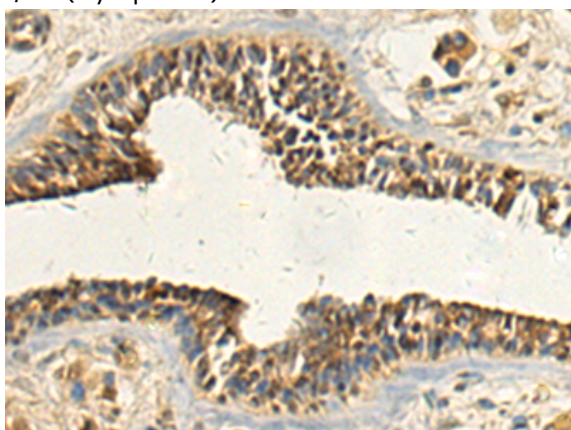
Storage & Shipping: Store at -20°C. Avoid repeated freezing and thawing



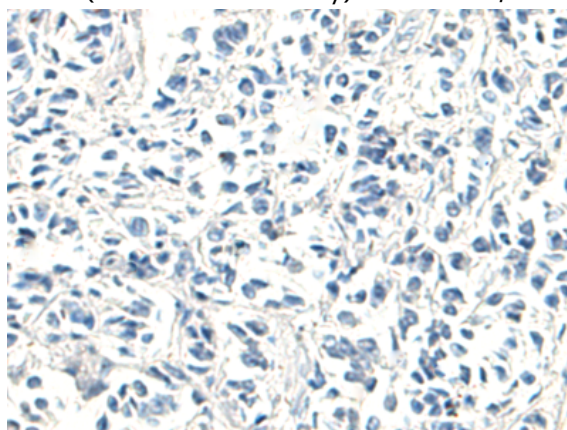
Immunohistochemistry analysis of paraffin embedded Human liver cancer tissue using 219418(FKBP3 Antibody) at a dilution of 1/180(Cytoplasm).



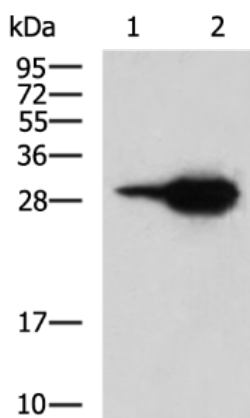
In comparison with the IHC on the left, the same paraffin-embedded Human liver cancer tissue is first treated with the fusion protein and then with 219418(Anti-FKBP3 Antibody) at dilution 1/180.



The image on the left is immunohistochemistry of paraffin-embedded Human breast cancer tissue using 219418(Anti-FKBP3 Antibody) at a dilution of 1/180.



In comparison with the IHC on the left, the same paraffin-embedded Human breast cancer tissue is first treated with fusion protein and then with D226836(Anti-FKBP3 Antibody) at dilution 1/180.



Gel: 12%SDS-PAGE, Lysate: 40 µg;
 Lane 1-2: Human bladder transitional cell carcinoma cancer next level 2-3 tissue, Human bladder transitional cell carcinoma grade 2-3 tissue lysates;
 Primary antibody: 219418(FKBP3 Antibody) at dilution 1/1000;
 Secondary antibody: HRP-conjugated Goat anti rabbit IgG at 1/5000 dilution;
 Exposure time: 10 seconds



Product Description

Pioneering GTPase and Oncogene Product Development since 2010
