

## FKBP6 RABBIT MAB

**Cat.#:** N263334

**Product Name:** Anti-FKBP6 Rabbit Monoclonal Antibody

**Synonyms:** FKBP36

**UNIPROT ID:** O75344

**Background:** Co-chaperone required during spermatogenesis to repress transposable elements and prevent their mobilization, which is essential for the germline integrity.

**Immunogen:** A synthetic peptide of human FKBP6

**Applications:** WB,IHC-P

**Recommended Dilutions:** WB: 1/500-1/1000 IHC: 1/50-1/100

**Host Species:** Rabbit

**Clonality:** Rabbit Monoclonal

**Clone ID:** R05-4G2

**MW:** Calculated MW: 37 kDa; Observed MW: 37 kDa

**Isotype:** IgG

**Purification:** Affinity Purified

**Species Reactivity:** Human,Mouse,Rat

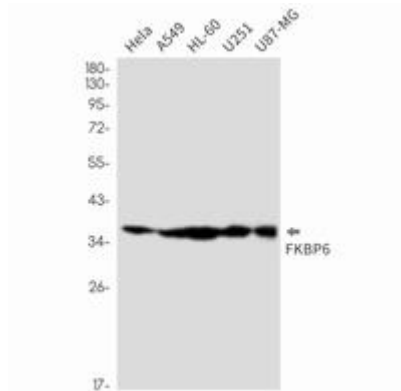
**Conjugation:** Unconjugated

**Modification:** Unmodified

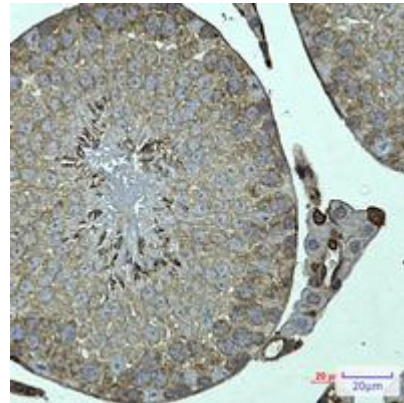
**Constituents:** PBS (without Mg<sup>2+</sup> and Ca<sup>2+</sup>), pH 7.3 containing 50% glycerol, 0.5% BSA and 0.02% sodium azide

**Research Areas:** Immunology

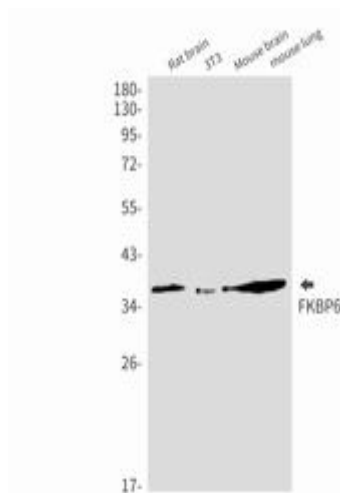
**Storage & Shipping:** Store at -20°C. Avoid repeated freezing and thawing



Western blot analysis of FKBP6 in HeLa, A549, HL-60, U251, U87-MG lysates using FKBP6 antibody



Immunohistochemistry analysis of paraffin-embedded mouse testis using FKBP6 antibody. High-pressure and temperature Sodium Citrate pH 6.0 was used for antigen retrieval.



Western blot analysis of FKBP6 in rat brain, 3T3, mouse brain, mouse lung lysates using FKBP6 antibody.