

## FKBP6 RABBIT PAB

**Cat.#:** S218153

**Product Name:** Anti-FKBP6 Rabbit Polyclonal Antibody

**Synonyms:** FKBP36

**UNIPROT ID:** O75344 (Gene Accession - BC036817 )

**Background:** The protein encoded by this gene is a cis-trans peptidyl-prolyl isomerase that may function in immunoregulation and basic cellular processes involving protein folding and trafficking. This gene is located in a chromosomal region that is deleted in Williams-Beuren syndrome. Defects in this gene may cause male infertility. There are multiple pseudogenes for this gene located nearby on chromosome 7. Alternative splicing results in multiple transcript variants.

**Immunogen:** Full length fusion protein

**Applications:** ELISA, WB, IHC

**Recommended Dilutions:** IHC: 25-100;WB: 200-1000;ELISA: 5000-10000

**Host Species:** Rabbit

**Clonality:** Rabbit Polyclonal

**Isotype:** Immunogen-specific rabbit IgG

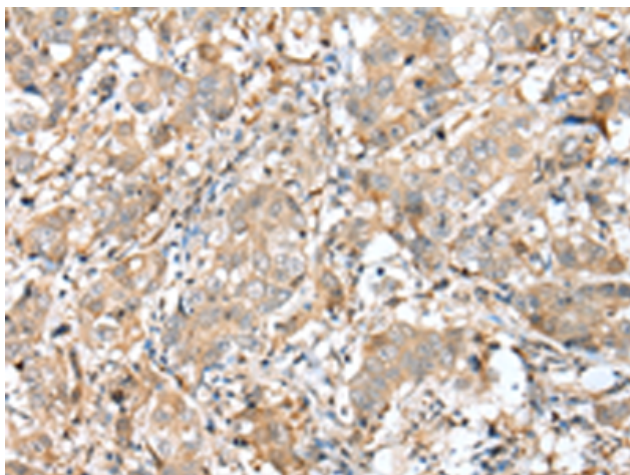
**Purification:** Antigen affinity purification

**Species Reactivity:** Human, Mouse, Rat

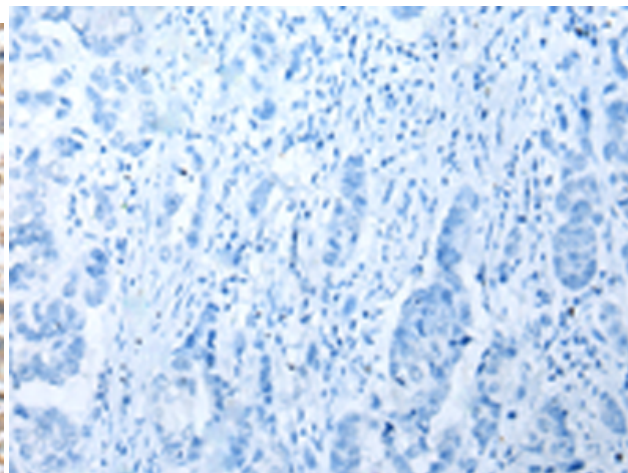
**Constituents:** PBS (without Mg<sup>2+</sup> and Ca<sup>2+</sup>), pH 7.4, 150 mM NaCl, 0.05% Sodium Azide and 40% glycerol

**Research Areas:** Immunology

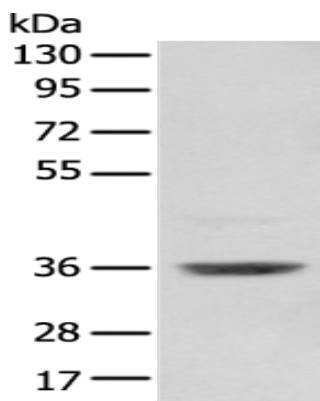
**Storage & Shipping:** Store at -20°C. Avoid repeated freezing and thawing



Immunohistochemistry analysis of paraffin embedded Human breast cancer tissue using 218153(FKBP6 Antibody) at a dilution of 1/25(Cytoplasm).



In comparison with the IHC on the left, the same paraffin-embedded Human breast cancer tissue is first treated with the fusion protein and then with 218153(Anti-FKBP6 Antibody) at dilution 1/25.



Gel: 8%SDS-PAGE, Lysate: 40  $\mu$ g;  
Lane: Human testis tissue;  
Primary antibody: 218153(FKBP6 Antibody) at dilution 1/250;  
Secondary antibody: Goat anti rabbit IgG at 1/8000 dilution;  
Exposure time: 10 seconds