

## FLAG TAG MAB

### Anti-Flag Tag Mouse Monoclonal Antibody

**Cat. #:** 28002

**Size:** 100  $\mu$ L

**Symbol:** FLAG(M2)

**Description:** Anti-Flag Tag Mouse Monoclonal Antibody

**Background:** The Anti-Flag antibody recognizes any protein containing Flag Tag.

**Immunogen:** DYKDDDDKC

**Applications:** ELISA, WB, IF, IHC

**Recommended Dilutions:**

ELISA 1:2000-1:5000

WB 1:1000-1:5000

IF 1:100-1:200

**Concentration:** 1 mg/ml

**Host Species:** Mouse

**Format:** Liquid

**Clonality:** Monoclonal

**Isotype:** IgG

**Purity:** Purified from ascites

**Preservative:** No

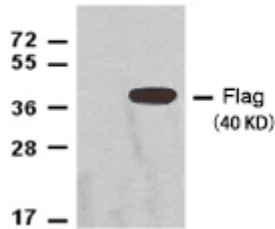
**Constituents:** PBS (without  $Mg^{2+}$  and  $Ca^{2+}$ ), pH 7.4, 150 mM NaCl, 50% glycerol

**Species Reactivity:** Recognizes protein contain Flag.

**Storage Conditions:** Store at  $-20^{\circ}C$ . Avoid repeated freezing and thawing

## Western blot:

Flag protein



Western blot: Recombinant Flag tag fusion protein was diluted with Flag mouse monoclonal antibody (1:1000), and the protein loading amount was 50ng, and Western blot analysis was performed.