

## FLI1 RABBIT MAB

**Cat.#:** N262225

**Product Name:** Anti-FLI1 Rabbit Monoclonal Antibody

**Synonyms:** FLI1; Friend leukemia integration 1 transcription factor; Proto-oncogene Fli-1; Transcription factor ERGB

**UNIPROT ID:** Q01543

**Background:** FLI1 Sequence-specific transcriptional activator. Recognizes the DNA sequence 5'-C[CA]GGAAGT-3'. Belongs to the ETS family. Can form homodimers or heterodimers with ETV6/TEL1. 2 isoforms of the human protein are produced by alternative splicing.

**Immunogen:** A synthetic peptide of human FLI1

**Applications:** WB,IHC-P

**Recommended Dilutions:** WB: 1/500-1/1000 IHC: 1/50-1/100

**Host Species:** Rabbit

**Clonality:** Rabbit Monoclonal

**Clone ID:** R01-0C2

**MW:** Calculated MW: 51 kDa; Observed MW: 51 kDa

**Isotype:** IgG

**Purification:** Affinity Purified

**Species Reactivity:** Human,Rat

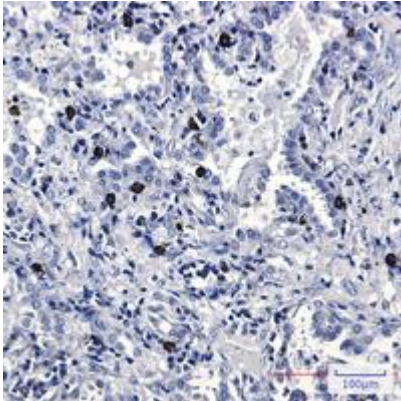
**Conjugation:** Unconjugated

**Modification:** Unmodified

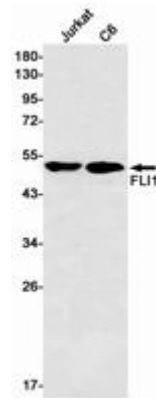
**Constituents:** PBS (without Mg<sup>2+</sup> and Ca<sup>2+</sup>), pH 7.3 containing 50% glycerol, 0.5% BSA and 0.02% sodium azide

**Research Areas:** Cell Biology

**Storage & Shipping:** Store at -20°C. Avoid repeated freezing and thawing



Immunohistochemistry analysis of paraffin-embedded Human lung cancer using FLI1 antibody. High-pressure and temperature Sodium Citrate pH 6.0 was used for antigen retrieval.



Western blot analysis of FLI1 in Jurkat, C6 lysates using FLI1 antibody.