

FLOT2 RABBIT PAB

Cat.#: S218868

Product Name: Anti-FLOT2 Rabbit Polyclonal Antibody

Synonyms: ESA; ECS1; ESA1; ECS-1; M17S1

UNIPROT ID: Q14254 (Gene Accession - BC017292)

Background: Caveolae are small domains on the inner cell membrane involved in vesicular trafficking and signal transduction. This gene encodes a caveolae-associated, integral membrane protein, which is thought to function in neuronal signaling. May act as a scaffolding protein within caveolar membranes, functionally participating in formation of caveolae or caveolae-like vesicles. May be involved in epidermal cell adhesion and epidermal structure and function.

Immunogen: Fusion protein of human FLOT2

Applications: ELISA, WB, IHC

Recommended Dilutions: IHC: 50-300;WB: 500-2000;ELISA: 5000-10000

Host Species: Rabbit

Clonality: Rabbit Polyclonal

Isotype: Immunogen-specific rabbit IgG

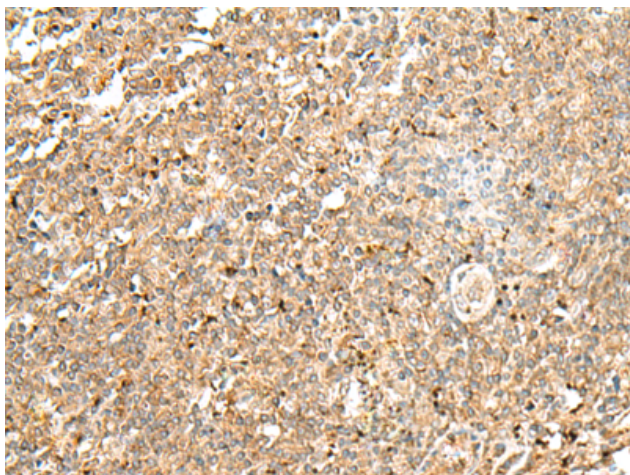
Purification: Antigen affinity purification

Species Reactivity: Human, Mouse, Rat

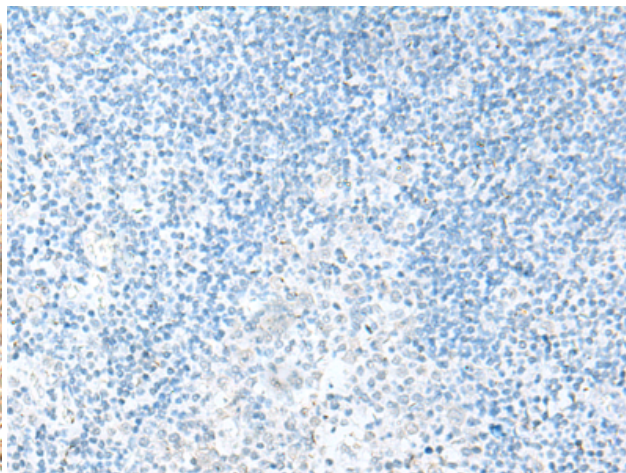
Constituents: PBS (without Mg²⁺ and Ca²⁺), pH 7.4, 150 mM NaCl, 0.05% Sodium Azide and 40% glycerol

Research Areas: Signal Transduction, Neuroscience

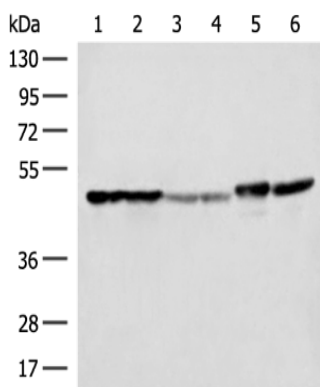
Storage & Shipping: Store at -20°C. Avoid repeated freezing and thawing



Immunohistochemistry analysis of paraffin embedded Human tonsil tissue using 218868(FLOT2 Antibody) at a dilution of 1/50(Cytoplasm and Cell membrane).



In comparison with the IHC on the left, the same paraffin-embedded Human tonsil tissue is first treated with the fusion protein and then with 218868(Anti-FLOT2 Antibody) at dilution 1/50.



Gel: 8%SDS-PAGE, Lysate: 40 μ g;
 Lane 1-6: HeLa, A375, Human fetal liver tissue,
 Human fetal brain tissue, HepG2 cell and
 Mouse brain tissue lysates;
 Primary antibody: 218868(FLOT2 Antibody) at
 dilution 1/350;
 Secondary antibody: Goat anti rabbit IgG at
 1/8000 dilution;
 Exposure time: 3 seconds