

## FLT3 LIGAND RABBIT PAB

**Cat.#:** N225190

**Product Name:** Anti-Flt3 Ligand Rabbit pAb

**Synonyms:** FLT3LG; Fms-related tyrosine kinase 3 ligand; Flt3 ligand; Flt3L; SL cytokine

**UNIPROT ID:** P49771

**Background:** Stimulates the proliferation of early hematopoietic cells by activating FLT3.

**Immunogen:** The antiserum was produced against synthesized peptide derived from the C-terminal region of human FLT3LG. AA range:171-220

**Applications:** WB,ELISA

**Recommended Dilutions:** WB: 1/500-1/1000 ELISA: 1/10000

**Host Species:** Rabbit

**Clonality:** Rabbit Polyclonal

**Clone ID:** -

**MW:** Calculated MW: 26 kDa; Observed MW: 26 kDa

**Isotype:** IgG

**Purification:** Affinity Purified

**Species Reactivity:** Human

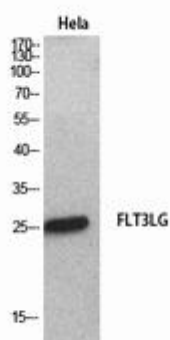
**Conjugation:** Unconjugated

**Modification:** Unmodified

**Constituents:** PBS (without Mg<sup>2+</sup> and Ca<sup>2+</sup>), pH 7.3 containing 50% glycerol, 0.5% BSA and 0.02% sodium azide

**Research Areas:** Cardiovascular

**Storage & Shipping:** Store at -20°C. Avoid repeated freezing and thawing



Western blot analysis of Flt3 Ligand in HeLa lysates using Flt3 Ligand antibody.



# Product Description

Pioneering GTPase and Oncogene Product Development since 2010

---