

## FNBP1L RABBIT PAB

**Cat.#:** S222043

**Product Name:** Anti-FNBP1L Rabbit Polyclonal Antibody

**Synonyms:** TOCA1; Clorf39

**UNIPROT ID:** Q5T0N5 (Gene Accession - NP\_001157945 )

**Background:** The protein encoded by this gene binds to both CDC42 and N-WASP. This protein promotes CDC42-induced actin polymerization by activating the N-WASP-WIP complex and, therefore, is involved in a pathway that links cell surface signals to the actin cytoskeleton. Alternative splicing results in multiple transcript variants encoding different isoforms.

**Immunogen:** Synthetic peptide of human FNBP1L

**Applications:** ELISA, WB, IHC

**Recommended Dilutions:** IHC: 20-100;WB: 500-2000;ELISA: 5000-10000

**Host Species:** Rabbit

**Clonality:** Rabbit Polyclonal

**Isotype:** Immunogen-specific rabbit IgG

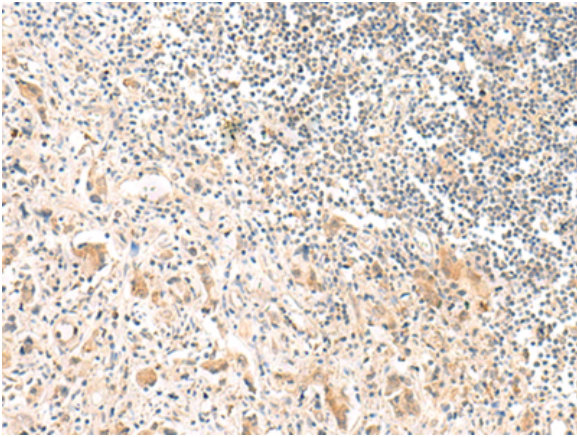
**Purification:** Antigen affinity purification

**Species Reactivity:** Human, Mouse, Rat

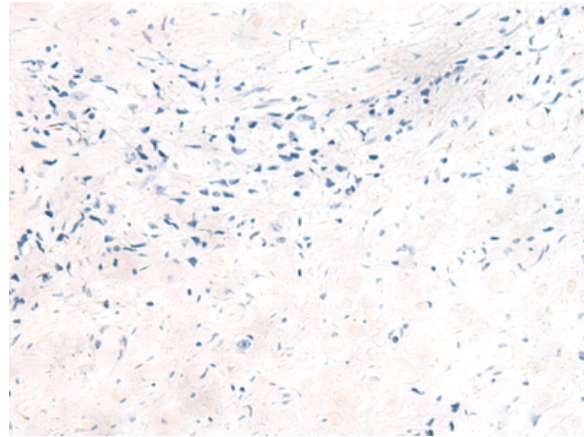
**Constituents:** PBS (without Mg<sup>2+</sup> and Ca<sup>2+</sup>), pH 7.4, 150 mM NaCl, 0.05% Sodium Azide and 40% glycerol

**Research Areas:** Signal Transduction, Neuroscience

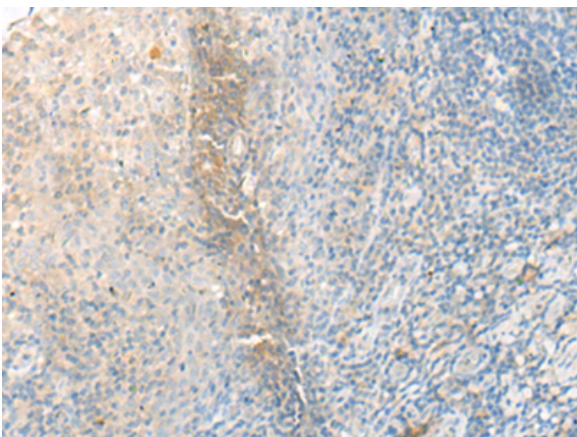
**Storage & Shipping:** Store at -20°C. Avoid repeated freezing and thawing



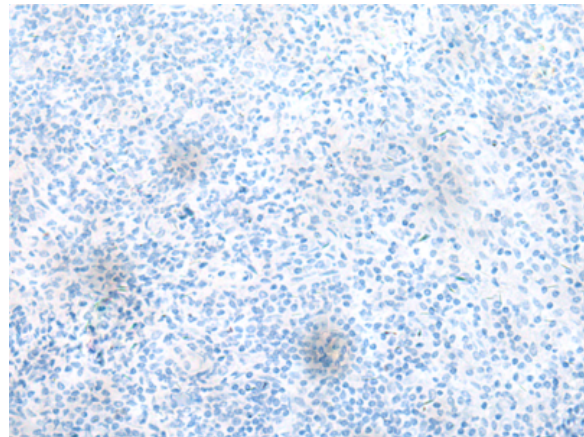
Immunohistochemistry analysis of paraffin embedded Human prostate cancer tissue using 222043(FNBPIL Antibody) at a dilution of 1/30(Cytoplasm).



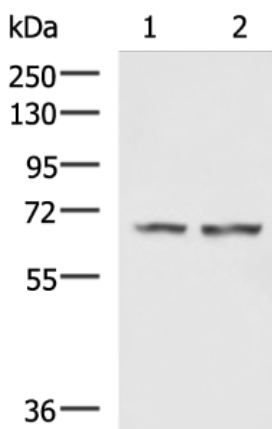
In comparison with the IHC on the left, the same paraffin-embedded Human prostate cancer tissue is first treated with the synthetic peptide and then with 222043(Anti-FNBPIL Antibody) at dilution 1/30.



The image on the left is immunohistochemistry of paraffin-embedded Human tonsil tissue using 222043(Anti-FNBPIL Antibody) at a dilution of 1/30.



In comparison with the IHC on the left, the same paraffin-embedded Human tonsil tissue is first treated with synthetic peptide and then with D263927(Anti-FNBPIL Antibody) at dilution 1/30.



Gel: 8%SDS-PAGE, Lysate: 40 µg;  
Lane 1-2: Human cerebella tissue, Human cerebrum tissue lysates;  
Primary antibody: 222043(FNBPIL Antibody) at dilution 1/750;  
Secondary antibody: HRP-conjugated Goat anti rabbit IgG at 1/5000 dilution;  
Exposure time: 3 minutes



# Product Description

Pioneering GTPase and Oncogene Product Development since 2010

---