

FOSL1 RABBIT PAB

Cat.#: S219779

Product Name: Anti-FOSL1 Rabbit Polyclonal Antibody

Synonyms: FRA; FRA1; fra-1

UNIPROT ID: P15407 (Gene Accession - NP_005429)

Background: The Fos gene family consists of 4 members: FOS, FOSB, FOSL1, and FOSL2. These genes encode leucine zipper proteins that can dimerize with proteins of the JUN family, thereby forming the transcription factor complex AP-1. As such, the FOS proteins have been implicated as regulators of cell proliferation, differentiation, and transformation.

Immunogen: Synthetic peptide of human FOSL1

Applications: ELISA, WB, IHC

Recommended Dilutions: IHC: 50-200;WB: 500-2000;ELISA: 2000-5000

Host Species: Rabbit

Clonality: Rabbit Polyclonal

Isotype: Immunogen-specific rabbit IgG

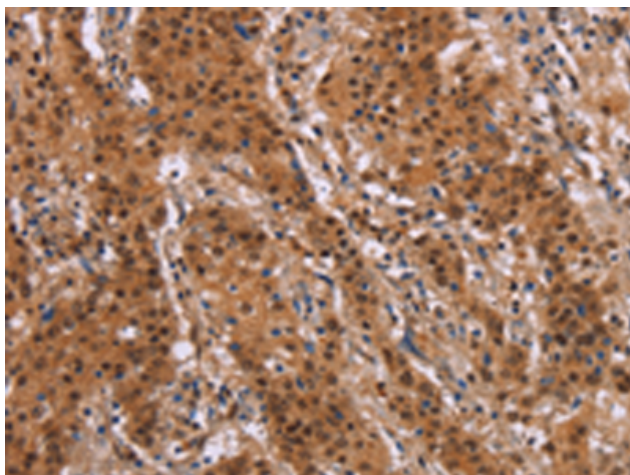
Purification: Antigen affinity purification

Species Reactivity: Human, Rat

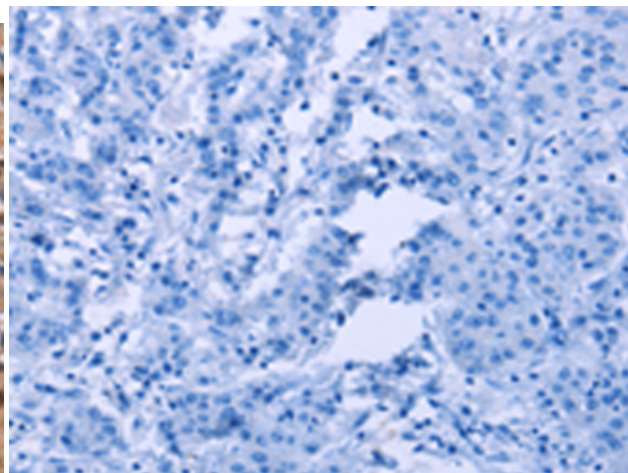
Constituents: PBS (without Mg²⁺ and Ca²⁺), pH 7.4, 150 mM NaCl, 0.05% Sodium Azide and 40% glycerol

Research Areas: Epigenetics and Nuclear Signaling

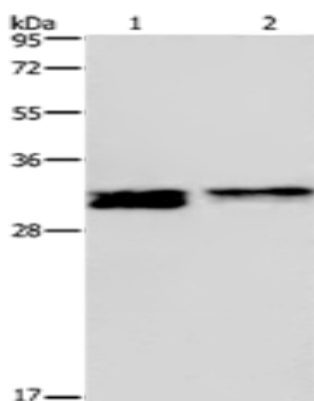
Storage & Shipping: Store at -20°C. Avoid repeated freezing and thawing



Immunohistochemistry analysis of paraffin embedded Human gastric cancer tissue using 219779(FOSL1 Antibody) at a dilution of 1/30(nucleus).



In comparison with the IHC on the left, the same paraffin-embedded Human gastric cancer tissue is first treated with the synthetic peptide and then with 219779(Anti-FOSL1 Antibody) at dilution 1/30.



Gel: 10%SDS-PAGE, Lysate: 40 µg;
 Lane 1-2: HeLa cells, Jurkat cells;
 Primary antibody: 219779(FOSL1 Antibody) at dilution 1/615;
 Secondary antibody: Goat anti rabbit IgG at 1/8000 dilution;
 Exposure time: 20 seconds