

FOXD1 RABBIT PAB

Cat.#: S213522

Product Name: Anti-FOXD1 Rabbit Polyclonal Antibody

Synonyms: FKHL8, FREAC4

UNIPROT ID: Q16676 (Gene Accession - NP_004463)

Background: This intronless gene belongs to the forkhead family of transcription factors which is characterized by a distinct forkhead domain. The specific function of this gene has not yet been determined; however, it may play a role in tumor formation.

Immunogen: Synthetic peptide of human FOXD1

Applications: ELISA, IHC

Recommended Dilutions: IHC: Oct-50; ELISA: 500-5000

Host Species: Rabbit

Clonality: Rabbit Polyclonal

Isotype: Immunogen-specific rabbit IgG

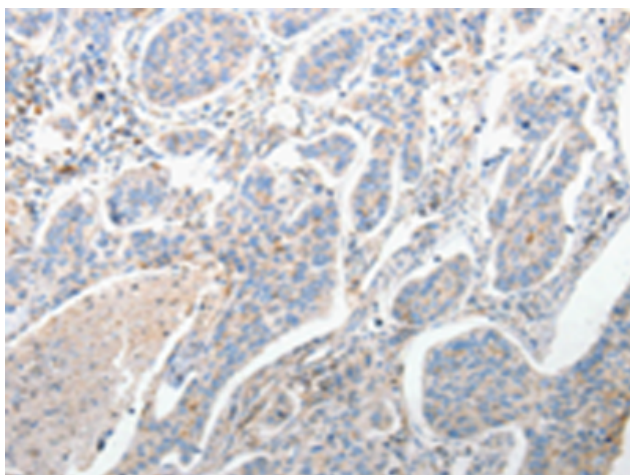
Purification: Antigen affinity purification

Species Reactivity: Human, Mouse

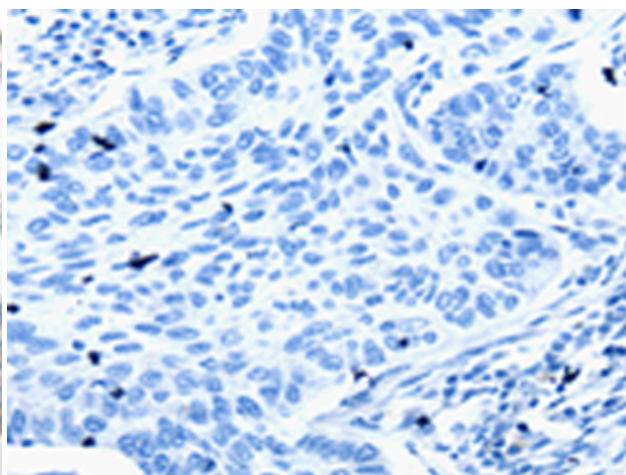
Constituents: PBS (without Mg²⁺ and Ca²⁺), pH 7.4, 150 mM NaCl, 0.05% Sodium Azide and 40% glycerol

Research Areas: Epigenetics and Nuclear Signaling

Storage & Shipping: Store at -20°C. Avoid repeated freezing and thawing



Immunohistochemistry analysis of paraffin embedded Human lung cancer tissue using 213522(FOXD1 Antibody) at a dilution of 1/25(Cytoplasm, Nucleus).



In comparison with the IHC on the left, the same paraffin-embedded Human lung cancer tissue is first treated with the synthetic peptide and then with 213522(Anti-FOXD1 Antibody) at dilution 1/25.