

## FOXG1 RABBIT PAB

**Cat.#:** S221230

**Product Name:** Anti-FOXG1 Rabbit Polyclonal Antibody

**Synonyms:** BFI; BF2; QIN; FKH2; HBF2; HFK1; HFK2; HFK3; KHL2; FHLK3; FKHL1; FKHL2; FKHL3; FKHL4; HBF-1; HBF-2; HBF-3; FOXG1A; FOXG1B; FOXG1C; HBF-G2

**UNIPROT ID:** P55316 (Gene Accession - NP\_005240 )

**Background:** This locus encodes a member of the forked-head transcription factor family. The encoded protein, which functions as a repressor, may play a role in brain development. Mutations at this locus have been associated with Rett syndrome.

**Immunogen:** Synthetic peptide of human FOXG1

**Applications:** ELISA, IHC

**Recommended Dilutions:** IHC: 25-100; ELISA: 2000-5000

**Host Species:** Rabbit

**Clonality:** Rabbit Polyclonal

**Isotype:** Immunogen-specific rabbit IgG

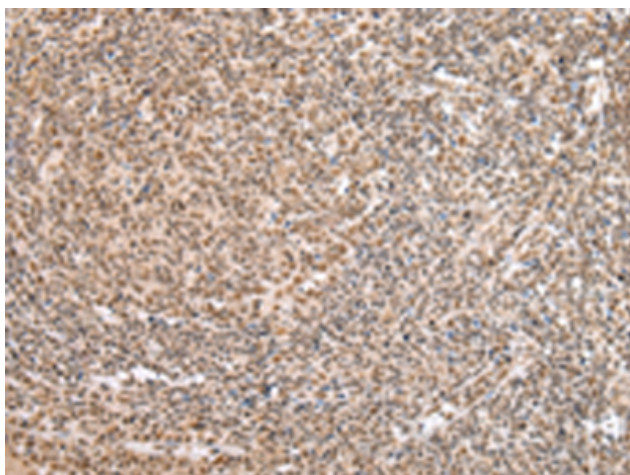
**Purification:** Antigen affinity purification

**Species Reactivity:** Human, Mouse, Rat

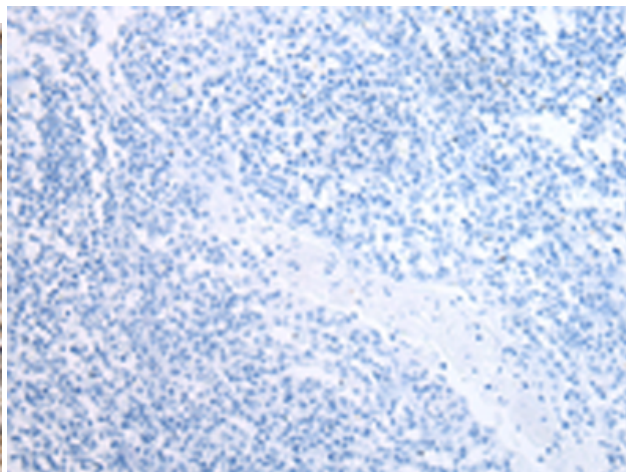
**Constituents:** PBS (without Mg<sup>2+</sup> and Ca<sup>2+</sup>), pH 7.4, 150 mM NaCl, 0.05% Sodium Azide and 40% glycerol

**Research Areas:** Epigenetics and Nuclear Signaling, Neuroscience

**Storage & Shipping:** Store at -20°C. Avoid repeated freezing and thawing



Immunohistochemistry analysis of paraffin embedded Human tonsil tissue using 221230(FOXG1 Antibody) at a dilution of 1/35(Nucleus).



In comparison with the IHC on the left, the same paraffin-embedded Human tonsil tissue is first treated with the synthetic peptide and then with 221230(Anti-FOXG1 Antibody) at dilution 1/35.