

FOXO3 RABBIT PAB

Cat.#: S219784

Product Name: Anti-FOXO3 Rabbit Polyclonal Antibody

Synonyms: FOXO2, AF6q21, FKHRL1, FOXO3A, FKHRLIP2

UNIPROT ID: O43524 (Gene Accession - NP_001446)

Background: This gene belongs to the forkhead family of transcription factors which are characterized by a distinct forkhead domain. This gene likely functions as a trigger for apoptosis through expression of genes necessary for cell death. Translocation of this gene with the MLL gene is associated with secondary acute leukemia. Alternatively spliced transcript variants encoding the same protein have been observed. Interacts with YWHAB/14-3-3-beta and YWHAZ/14-3-3-zeta, which are required for cytosolic sequestration. Upon oxidative stress, interacts with STK4/MST1, which disrupts interaction with YWHAB/14-3-3-beta and leads to nuclear translocation. Interacts with PIM1. Interacts with DDIT3/CHOP.

Immunogen: Synthetic peptide of human FOXO3

Applications: ELISA, IHC

Recommended Dilutions: IHC: 50-150; ELISA: 1000-5000

Host Species: Rabbit

Clonality: Rabbit Polyclonal

Isotype: Immunogen-specific rabbit IgG

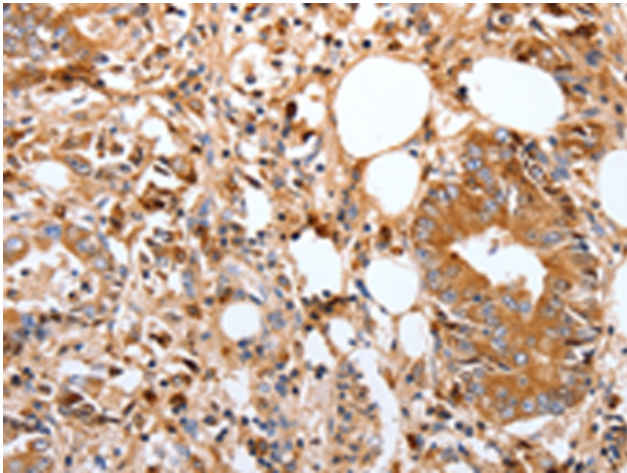
Purification: Antigen affinity purification

Species Reactivity: Human, Mouse

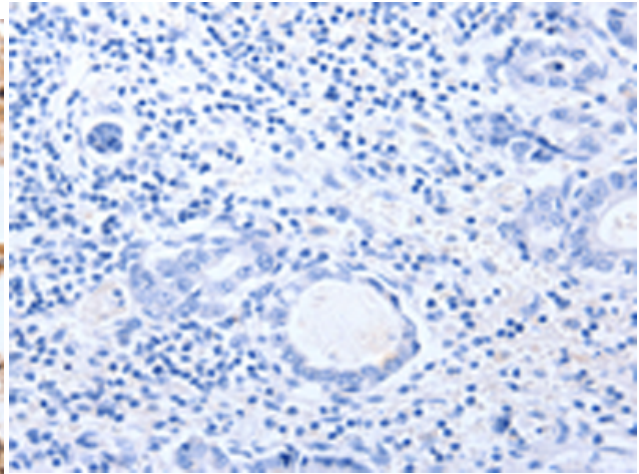
Constituents: PBS (without Mg²⁺ and Ca²⁺), pH 7.4, 150 mM NaCl, 0.05% Sodium Azide and 40% glycerol

Research Areas: Cardiovascular, Epigenetics and Nuclear Signaling, Cancer

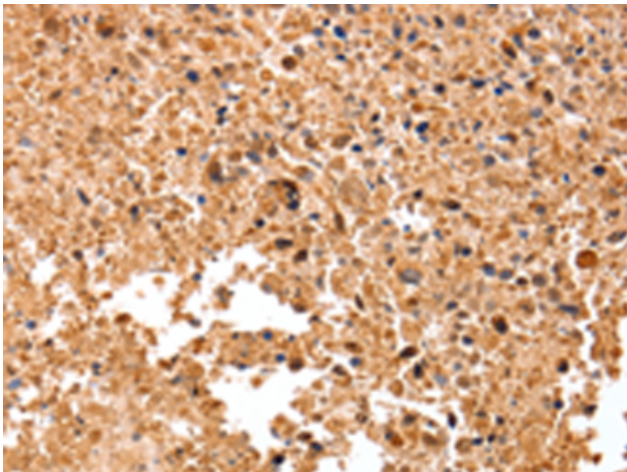
Storage & Shipping: Store at -20°C. Avoid repeated freezing and thawing



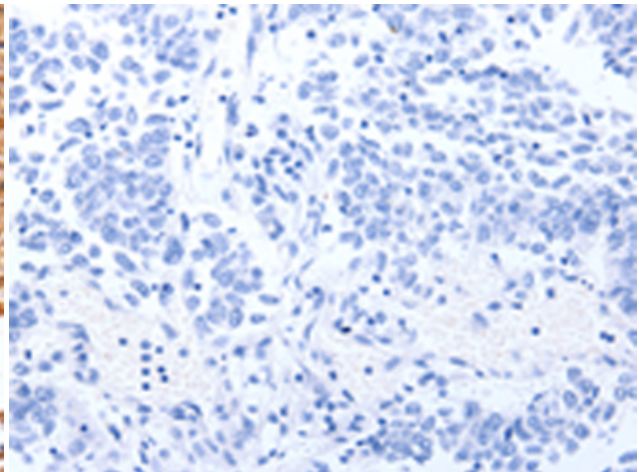
Immunohistochemistry analysis of paraffin embedded Human stomach cancer tissue using 219784(FOXO3 Antibody) at a dilution of 1/17(Cytoplasm, Nucleus).



In comparison with the IHC on the left, the same paraffin-embedded Human stomach cancer tissue is first treated with the synthetic peptide and then with 219784(Anti-FOXO3 Antibody) at dilution 1/17.



The image on the left is immunohistochemistry of paraffin-embedded Human lung cancer tissue using 219784(Anti-FOXO3 Antibody) at a dilution of 1/17.



In comparison with the IHC on the left, the same paraffin-embedded Human lung cancer tissue is first treated with synthetic peptide and then with D260364(Anti-FOXO3 Antibody) at dilution 1/17.