

FOXRED2 RABBIT PAB

Cat.#: S218768

Product Name: Anti-FOXRED2 Rabbit Polyclonal Antibody

Synonyms: ERFAD

UNIPROT ID: Q8IWF2 (Gene Accession - BC040351)

Background: Probable flavoprotein which may function in endoplasmic reticulum associated degradation (ERAD). May bind non-native proteins in the endoplasmic reticulum and target them to the ubiquitination machinery for subsequent degradation.

Immunogen: Fusion protein of human FOXRED2

Applications: ELISA, IHC

Recommended Dilutions: IHC: 40-200; ELISA: 2000-5000

Host Species: Rabbit

Clonality: Rabbit Polyclonal

Isotype: Immunogen-specific rabbit IgG

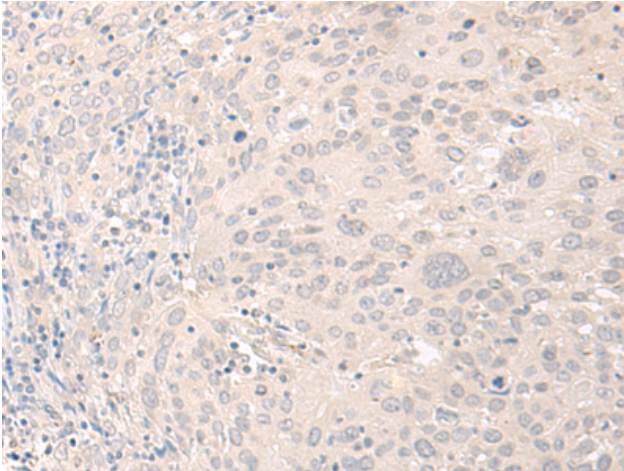
Purification: Antigen affinity purification

Species Reactivity: Human

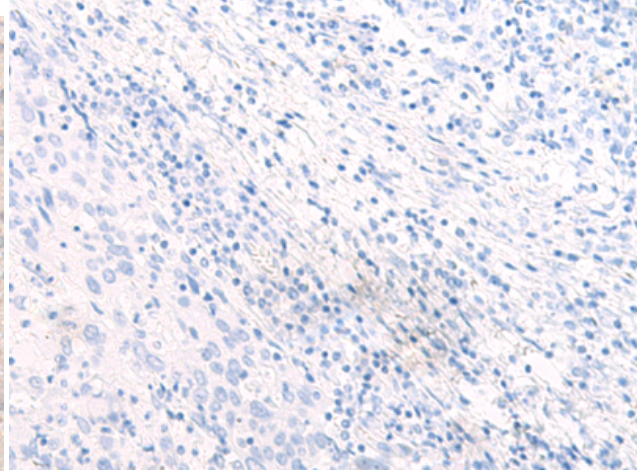
Constituents: PBS (without Mg²⁺ and Ca²⁺), pH 7.4, 150 mM NaCl, 0.05% Sodium Azide and 40% glycerol

Research Areas: Signal Transduction, Cell Biology

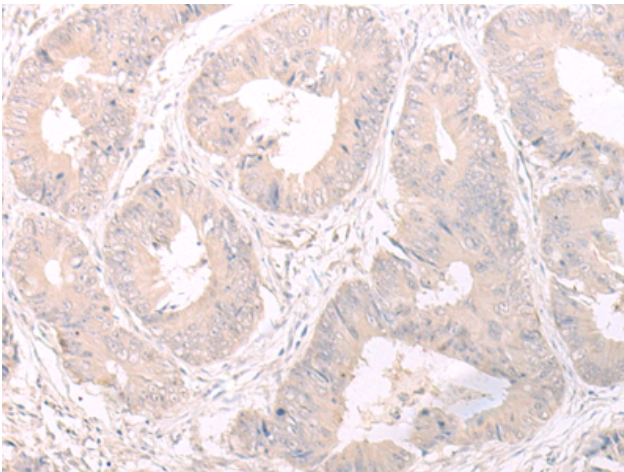
Storage & Shipping: Store at -20°C. Avoid repeated freezing and thawing



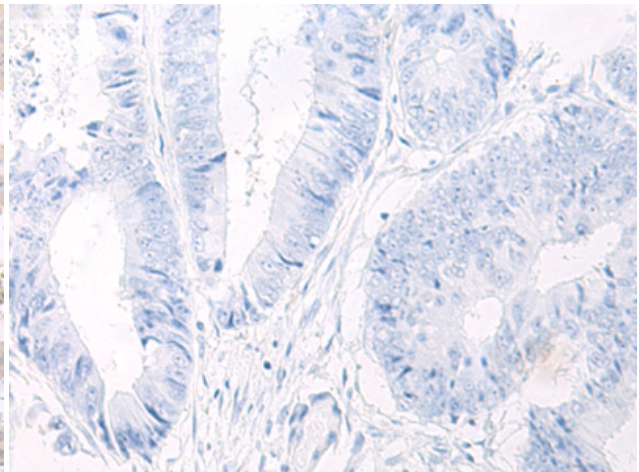
Immunohistochemistry analysis of paraffin-embedded Human cervical cancer tissue using 218768 (FOXRED2 Antibody) at a dilution of 1/35 (Cytoplasm).



In comparison with the IHC on the left, the same paraffin-embedded Human cervical cancer tissue is first treated with the fusion protein and then with 218768 (Anti-FOXRED2 Antibody) at dilution 1/35.



The image on the left is immunohistochemistry of paraffin-embedded Human colorectal cancer tissue using 218768 (Anti-FOXRED2 Antibody) at a dilution of 1/35.



In comparison with the IHC on the left, the same paraffin-embedded Human colorectal cancer tissue is first treated with fusion protein and then with D225139 (Anti-FOXRED2 Antibody) at dilution 1/35.