

## FRA2 RABBIT MAB

**Cat.#:** N262238

**Product Name:** Anti-FRA2 Rabbit Monoclonal Antibody

**Synonyms:** FOSL2; FRA2; Fos-related antigen 2; FRA-2

**UNIPROT ID:** P15408

**Background:** Controls osteoclast survival and size (By similarity). As a dimer with JUN, activates LIF transcription (By similarity). Activates CEBPB transcription in PGE2-activated osteoblasts.

**Immunogen:** A synthetic peptide of human FRA2

**Applications:** WB,IP

**Recommended Dilutions:** WB: 1/500-1/1000 IP: 1/20

**Host Species:** Rabbit

**Clonality:** Rabbit Monoclonal

**Clone ID:** R07-2A4

**MW:** Calculated MW: 35 kDa; Observed MW: 35-45 kDa

**Isotype:** IgG

**Purification:** Affinity Purified

**Species Reactivity:** Human

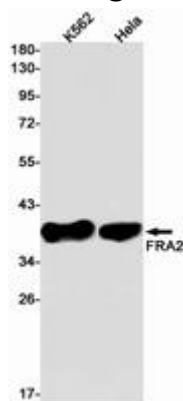
**Conjugation:** Unconjugated

**Modification:** Unmodified

**Constituents:** PBS (without Mg<sup>2+</sup> and Ca<sup>2+</sup>), pH 7.3 containing 50% glycerol, 0.5% BSA and 0.02% sodium azide

**Research Areas:** Epigenetics and Nuclear Signaling

**Storage & Shipping:** Store at -20°C. Avoid repeated freezing and thawing



Western blot analysis of FRA2 in K562, HeLa lysates using FRA2 antibody.



# Product Description

Pioneering GTPase and Oncogene Product Development since 2010

---