

## FRAT1 RABBIT MAB

**Cat.#:** N262240

**Product Name:** Anti-FRAT1 Rabbit Monoclonal Antibody

**Synonyms:** FRAT-1

**UNIPROT ID:** Q92837

**Background:** Positively regulates the Wnt signaling pathway by stabilizing beta-catenin through the association with GSK-3. May play a role in tumor progression and collaborate with PIM1 and MYC in lymphomagenesis.

**Immunogen:** A synthetic peptide of human FRAT1

**Applications:** WB, ICC/IF, IP

**Recommended Dilutions:** WB: 1/500-1/1000 IF: 1/50-1/200 IP: 1/20

**Host Species:** Rabbit

**Clonality:** Rabbit Monoclonal

**Clone ID:** R09-6H1

**MW:** Calculated MW: 29 kDa; Observed MW: 29 kDa

**Isotype:** IgG

**Purification:** Affinity Purified

**Species Reactivity:** Human

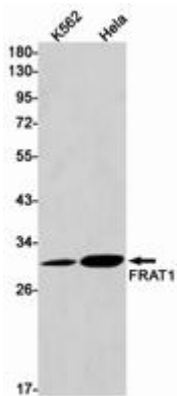
**Conjugation:** Unconjugated

**Modification:** Unmodified

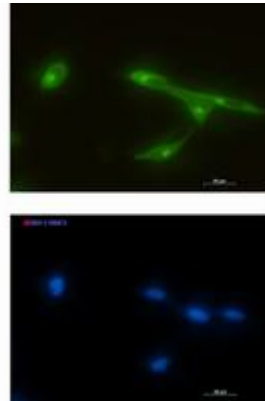
**Constituents:** PBS (without Mg<sup>2+</sup> and Ca<sup>2+</sup>), pH 7.3 containing 50% glycerol, 0.5% BSA and 0.02% sodium azide

**Research Areas:** Immunology

**Storage & Shipping:** Store at -20°C. Avoid repeated freezing and thawing



Western blot analysis of FRAT1 in K562, HeLa lysates using FRAT1 antibody.



Immunocytochemistry analysis of FRAT1 (green) in LNcap using FRAT1 antibody, and DAPI (blue).