

## FRK RABBIT PAB

**Cat.#:** S217456

**Product Name:** Anti-FRK Rabbit Polyclonal Antibody

**Synonyms:** GTK; RAK; PTK5

**UNIPROT ID:** P42685 (Gene Accession - BC012916 )

**Background:** The protein encoded by this gene belongs to the TYR family of protein kinases. This tyrosine kinase is a nuclear protein and may function during G1 and S phase of the cell cycle and suppress growth.

**Immunogen:** Fusion protein of human FRK

**Applications:** ELISA, WB, IHC

**Recommended Dilutions:** IHC: 50-200;WB: 500-2000;ELISA: 2000-5000

**Host Species:** Rabbit

**Clonality:** Rabbit Polyclonal

**Isotype:** Immunogen-specific rabbit IgG

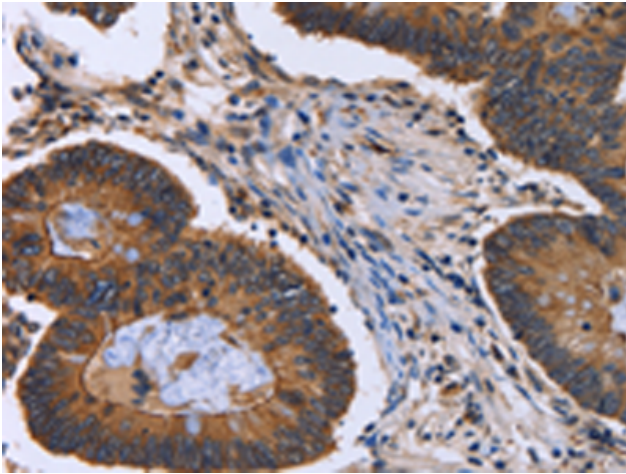
**Purification:** Antigen affinity purification

**Species Reactivity:** Human, Mouse, Rat

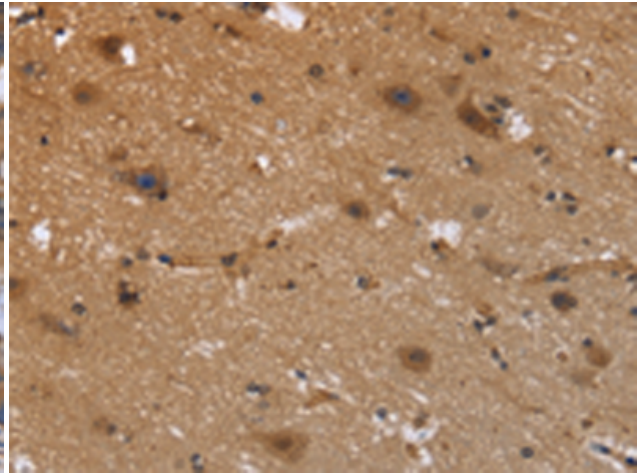
**Constituents:** PBS (without Mg<sup>2+</sup> and Ca<sup>2+</sup>), pH 7.4, 150 mM NaCl, 0.05% Sodium Azide and 40% glycerol

**Research Areas:** Cancer

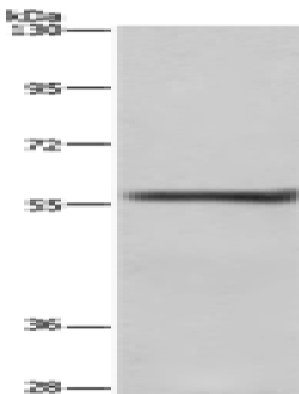
**Storage & Shipping:** Store at -20°C. Avoid repeated freezing and thawing



Immunohistochemistry analysis of paraffin-embedded Human colon cancer tissue using 217456(FRK Antibody) at a dilution of 1/40(Cytoplasm).



Immunohistochemistry analysis of paraffin-embedded Human brain tissue using 217456(Anti-FRK Antibody) at a dilution of 1/40.



Gel: 6%SDS-PAGE, Lysate: 40  $\mu$ g;  
Lane: A431 cells;  
Primary antibody: 217456(FRK Antibody) at dilution 1/1000;  
Secondary antibody: Goat anti rabbit IgG at 1/8000 dilution;  
Exposure time: 5 minutes