

FRMD5 RABBIT PAB

Cat.#: S219432

Product Name: Anti-FRMD5 Rabbit Polyclonal Antibody

Synonyms:

UNIPROT ID: Q7Z6J6 (Gene Accession - BC053647)

Background: May be involved in regulation of cell migration (PubMed:22846708, PubMed:25448675). May regulate cell-matrix interactions via its interaction with ITGB5 and modifying ITGB5 cytoplasmic tail interactions such as with FERMT2 and TLN1. May regulate ROCK1 kinase activity possibly involved in regulation of actin stress fiber formation (PubMed:25448675).

Immunogen: Fusion protein of human FRMD5

Applications: ELISA, WB, IHC

Recommended Dilutions: IHC: 150-300;WB: 500-2000;ELISA: 5000-10000

Host Species: Rabbit

Clonality: Rabbit Polyclonal

Isotype: Immunogen-specific rabbit IgG

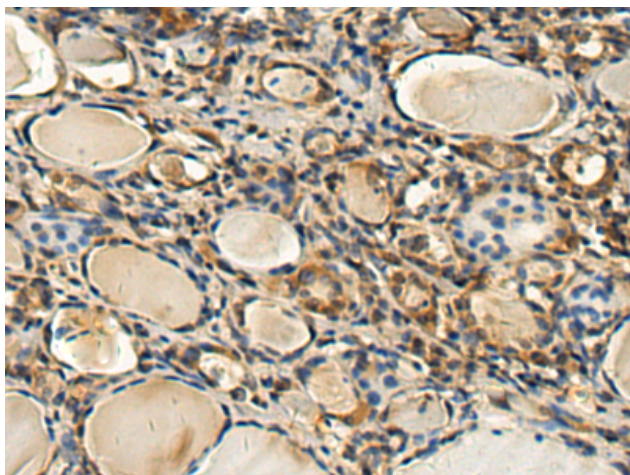
Purification: Antigen affinity purification

Species Reactivity: Human, Mouse

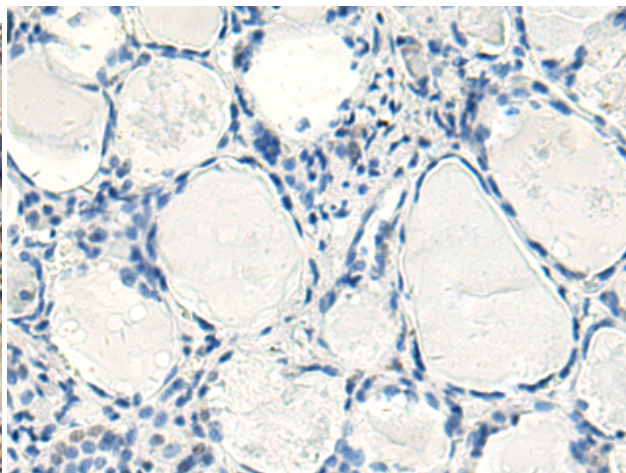
Constituents: PBS (without Mg²⁺ and Ca²⁺), pH 7.4, 150 mM NaCl, 0.05% Sodium Azide and 40% glycerol

Research Areas: Cell Biology

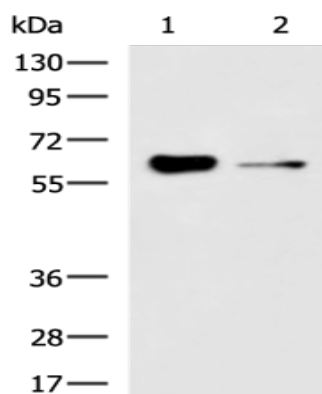
Storage & Shipping: Store at -20°C. Avoid repeated freezing and thawing



Immunohistochemistry analysis of paraffin embedded Human thyroid cancer tissue using 219432(FRMD5 Antibody) at a dilution of 1/160(Cell membrane).



In comparison with the IHC on the left, the same paraffin-embedded Human thyroid cancer tissue is first treated with the fusion protein and then with 219432(Anti-FRMD5 Antibody) at dilution 1/160.



Gel: 8%SDS-PAGE, Lysate: 40 µg;
Lane 1-2: HUVEC cell, Mouse kidney tissue lysates;
Primary antibody: 219432(FRMD5 Antibody) at dilution 1/1000;
Secondary antibody: HRP-conjugated Goat anti rabbit IgG at 1/5000 dilution;
Exposure time: 3 minutes