

## FRS2 RABBIT PAB

**Cat.#:** N225844

**Product Name:** Anti-FRS2 Rabbit pAb

**Synonyms:** Fibroblast growth factor receptor substrate 2; FGFR substrate 2; FGFR-signaling adaptor SNT; Suc1-associated neurotrophic factor target 1; SNT-1

**UNIPROT ID:** Q8WU20

**Background:** Adapter protein that links FGR and NGF receptors to downstream signaling pathways. Involved in the activation of MAP kinases. Modulates signaling via SHC1 by competing for a common binding site on NTRK1.

**Immunogen:** A synthesized peptide derived from human FRS2

**Applications:** WB,IP,FC

**Recommended Dilutions:** WB: 1/500-1/1000 IP: 1/20 FC: 1/50-1/100

**Host Species:** Rabbit

**Clonality:** Rabbit Polyclonal

**Clone ID:** -

**MW:** Calculated MW: 57 kDa; Observed MW: 57 kDa

**Isotype:** IgG

**Purification:** Affinity Chromatography

**Species Reactivity:** Human

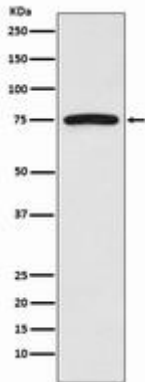
**Conjugation:** Unconjugated

**Modification:** Unmodified

**Constituents:** PBS (without Mg<sup>2+</sup> and Ca<sup>2+</sup>), pH 7.3 containing 50% glycerol, 0.5% BSA and 0.02% sodium azide

**Research Areas:** Signal Transduction

**Storage & Shipping:** Store at -20°C. Avoid repeated freezing and thawing



Western blot analysis of FRS2 in HeLa lysates using FRS2 antibody.