

FRUCTOSE 6 PHOSPHATE KINASE RABBIT MAB

Cat.#: N261615

Product Name: Anti-Fructose 6 Phosphate Kinase Rabbit Monoclonal Antibody

Synonyms: GSD7; PFK1; PFKA; PFKX; PFK-1; Phosphohexokinase

UNIPROT ID: P08237

Background: Carbohydrate degradation; glycolysis; D-glyceraldehyde 3-phosphate and glycerone phosphate from D-glucose: step 3/4.

Immunogen: A synthetic peptide of human Fructose 6 Phosphate Kinase

Applications: WB,ICC/IF

Recommended Dilutions: WB: 1/500-1/1000 IF: 1/50-1/200

Host Species: Rabbit

Clonality: Rabbit Monoclonal

Clone ID: R08-6B4

MW: Calculated MW: 85 kDa; Observed MW: 85 kDa

Isotype: IgG

Purification: Affinity Purified

Species Reactivity: Human,Mouse,Rat

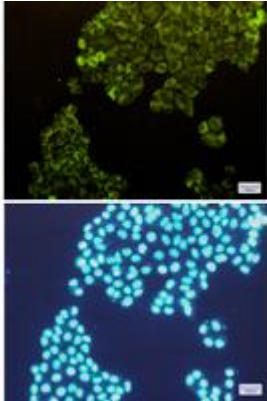
Conjugation: Unconjugated

Modification: Unmodified

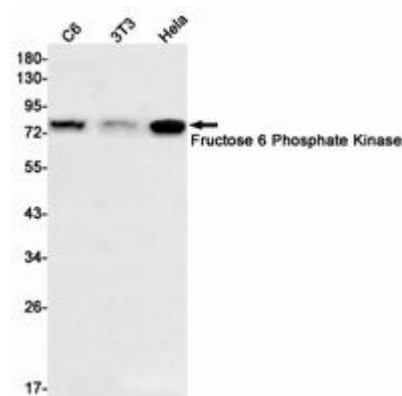
Constituents: PBS (without Mg²⁺ and Ca²⁺), pH 7.3 containing 50% glycerol, 0.5% BSA and 0.02% sodium azide

Research Areas: Signal Transduction

Storage & Shipping: Store at -20°C. Avoid repeated freezing and thawing



Immunocytochemistry analysis of Fructose 6 Phosphate Kinase (green) in HeLa using Fructose 6 Phosphate Kinase antibody, and DAPI (blue)



Western blot analysis of Fructose 6 Phosphate Kinase in C6, 3T3, HeLa lysates using Fructose 6 Phosphate Kinase antibody.