

FSCB RABBIT PAB

Cat.#: S218918

Product Name: Anti-FSCB Rabbit Polyclonal Antibody

Synonyms: C14orf155

UNIPROT ID: Q5H9T9 (Gene Accession - BC039878)

Background: May be involved in the later stages of fibrous sheath biogenesis and spermatozoa capacitation. Inhibits ROPNI and ROPNIL SUMOylation. Binds calcium.

Immunogen: Fusion protein of human FSCB

Applications: ELISA, IHC

Recommended Dilutions: IHC: 50-200; ELISA: 5000-10000

Host Species: Rabbit

Clonality: Rabbit Polyclonal

Isotype: Immunogen-specific rabbit IgG

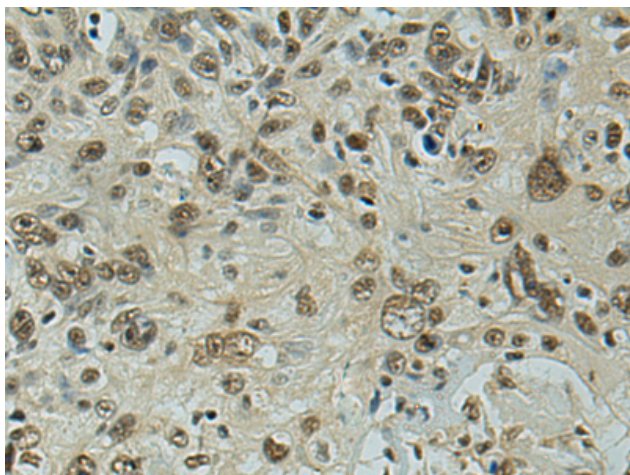
Purification: Antigen affinity purification

Species Reactivity: Human

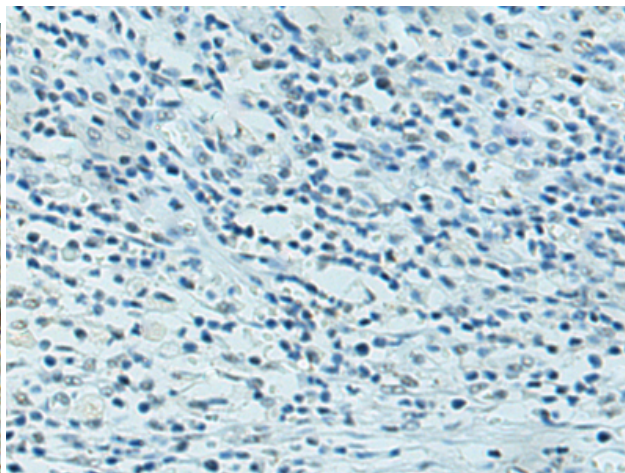
Constituents: PBS (without Mg²⁺ and Ca²⁺), pH 7.4, 150 mM NaCl, 0.05% Sodium Azide and 40% glycerol

Research Areas: Signal Transduction

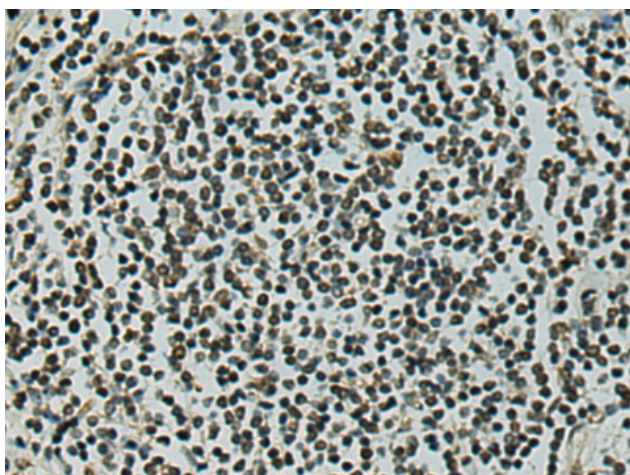
Storage & Shipping: Store at -20°C. Avoid repeated freezing and thawing



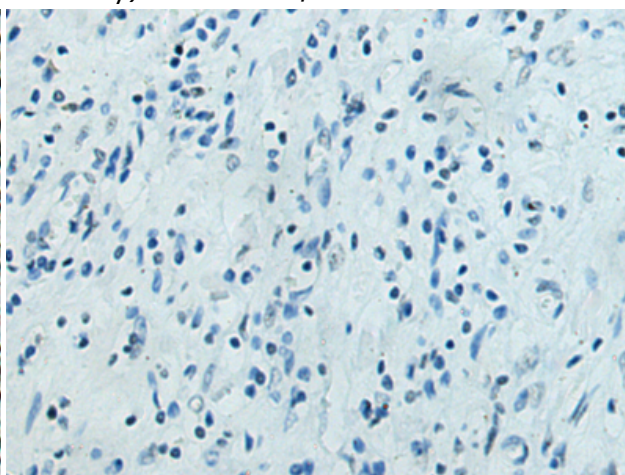
Immunohistochemistry analysis of paraffin embedded Human esophagus cancer tissue using 218918(FSCB Antibody) at a dilution of 1/100(Nucleus).



In comparison with the IHC on the left, the same paraffin-embedded Human esophagus cancer tissue is first treated with the fusion protein and then with 218918(Anti-FSCB Antibody) at dilution 1/100.



The image on the left is immunohistochemistry of paraffin-embedded Human colorectal cancer tissue using 218918(Anti-FSCB Antibody) at a dilution of 1/100.



In comparison with the IHC on the left, the same paraffin-embedded Human colorectal cancer tissue is first treated with fusion protein and then with D225511(Anti-FSCB Antibody) at dilution 1/100.