

## FSH BETA RABBIT PAB

**Cat.#:** N225952

**Product Name:** Anti-FSH beta Rabbit pAb

**Synonyms:** Follicle Stimulating Hormon; Follitropin beta chain; Follitropin subunit beta; FSHB; FSHbeta

**UNIPROT ID:** P01225

**Background:** Follicle stimulating hormone enables ovarian folliculogenesis to the antral follicle stage and is essential for Sertoli cell proliferation and maintenance of sperm quality in the testis.

**Immunogen:** A synthesized peptide derived from human FSH beta [FSHB]

**Applications:** WB,IP

**Recommended Dilutions:** WB: 1/500-1/1000 IP: 1/20

**Host Species:** Rabbit

**Clonality:** Rabbit Polyclonal

**Clone ID:** -

**MW:** Calculated MW: 15 kDa; Observed MW: 22 kDa

**Isotype:** IgG

**Purification:** Affinity Chromatography

**Species Reactivity:** Human

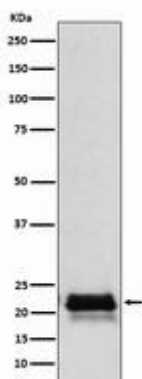
**Conjugation:** Unconjugated

**Modification:** Unmodified

**Constituents:** PBS (without Mg<sup>2+</sup> and Ca<sup>2+</sup>), pH 7.3 containing 50% glycerol, 0.5% BSA and 0.02% sodium azide

**Research Areas:** Signal Transduction

**Storage & Shipping:** Store at -20°C. Avoid repeated freezing and thawing



Western blot analysis of FSH beta (FSHB) in Human pituitary lysates using FSH beta antibody.



# Product Description

Pioneering GTPase and Oncogene Product Development since 2010

---