

FSHR RABBIT PAB

Cat.#: N225365

Product Name: Anti-FSHR Rabbit pAb

Synonyms: FSHR; LGR1; Follicle-stimulating hormone receptor; FSH-R; Follitropin receptor

UNIPROT ID: P23945

Background: The protein encoded by this gene belongs to family 1 of G-protein coupled receptors. It is the receptor for follicle stimulating hormone and functions in gonad development. Mutations in this gene cause ovarian dysgenesis type 1, and also ovarian hyperstimulation syndrome. Alternative splicing results in multiple transcript variants.

Immunogen: KLH coupled human protein peptide 120-200 Interacts with ARRB2.

Applications: WB, ICC/IF, ELISA

Recommended Dilutions: WB: 1/500-1/1000 IF: 1/50-1/200 ELISA: 1/10000

Host Species: Rabbit

Clonality: Rabbit Polyclonal

Clone ID: -

MW: Calculated MW: 78 kDa; Observed MW: 78 kDa

Isotype: IgG

Purification: Affinity Purified

Species Reactivity: Human, Mouse, Rat

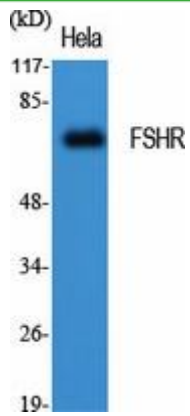
Conjugation: Unconjugated

Modification: Unmodified

Constituents: PBS (without Mg²⁺ and Ca²⁺), pH 7.3 containing 50% glycerol, 0.5% BSA and 0.02% sodium azide

Research Areas: Neuroscience

Storage & Shipping: Store at -20°C. Avoid repeated freezing and thawing



Western blot analysis of FSHR in HeLa lysates using FSHR antibody.