

## FSTL5 RABBIT PAB

**Cat.#:** S215816

**Product Name:** Anti-FSTL5 Rabbit Polyclonal Antibody

**Synonyms:**

**UNIPROT ID:** Q8N475 (Gene Accession - NP\_064501 )

**Background:** Follistatin-like 5 (FSTL5), a member of the follistatin family of genes, encodes a secretory glycoprotein. Previous study revealed that it might play a suppressive role in hepatocellular carcinoma (HCC). However, its clinical significances, biological functions and molecular mechanisms in HCC development are poorly understood.

**Immunogen:** Synthetic peptide of human FSTL5

**Applications:** ELISA, IHC

**Recommended Dilutions:** IHC: 50-300; ELISA: 5000-10000

**Host Species:** Rabbit

**Clonality:** Rabbit Polyclonal

**Isotype:** Immunogen-specific rabbit IgG

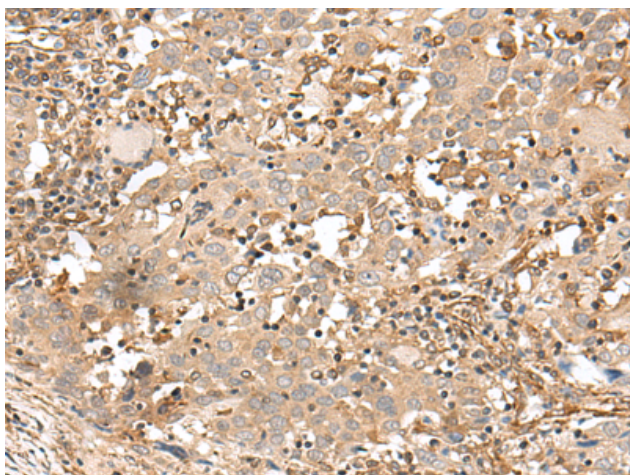
**Purification:** Antigen affinity purification

**Species Reactivity:** Human, Mouse

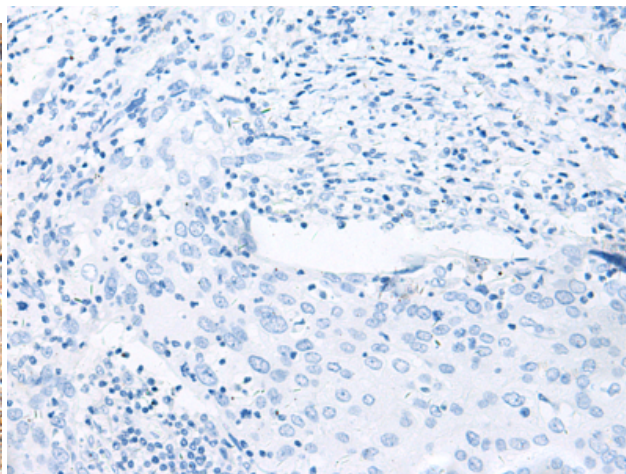
**Constituents:** PBS (without Mg<sup>2+</sup> and Ca<sup>2+</sup>), pH 7.4, 150 mM NaCl, 0.05% Sodium Azide and 40% glycerol

**Research Areas:** Cell Biology

**Storage & Shipping:** Store at -20°C. Avoid repeated freezing and thawing



Immunohistochemistry analysis of paraffin embedded Human cervical cancer tissue using 215816(FSTL5 Antibody) at a dilution of 1/50(Cytoplasm).



In comparison with the IHC on the left, the same paraffin-embedded Human cervical cancer tissue is first treated with the synthetic peptide and then with 215816(Anti-FSTL5 Antibody) at dilution 1/50.