

## FUBP3 RABBIT PAB

**Cat.#:** S212551

**Product Name:** Anti-FUBP3 Rabbit Polyclonal Antibody

**Synonyms:** FBP3

**UNIPROT ID:** Q96I24 (Gene Accession - BC007874 )

**Background:** May interact with single-stranded DNA from the far-upstream element (FUSE). May activate gene expression.

**Immunogen:** Fusion protein of human FUBP3

**Applications:** ELISA, IHC

**Recommended Dilutions:** IHC: 100-300; ELISA: 5000-10000

**Host Species:** Rabbit

**Clonality:** Rabbit Polyclonal

**Isotype:** Immunogen-specific rabbit IgG

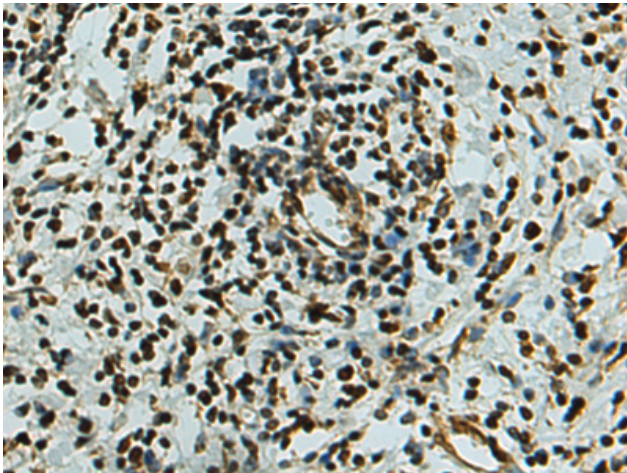
**Purification:** Antigen affinity purification

**Species Reactivity:** Human

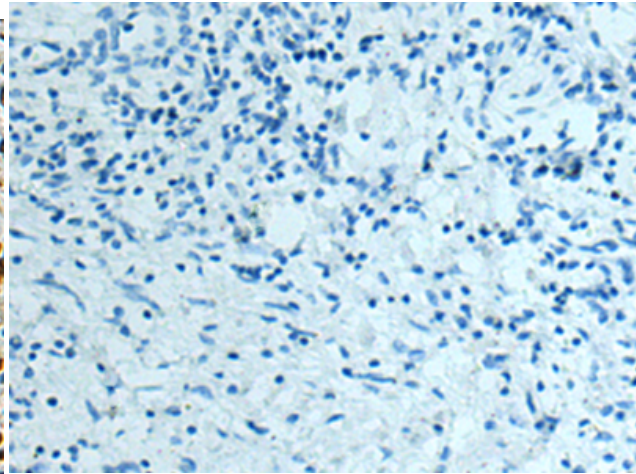
**Constituents:** PBS (without Mg<sup>2+</sup> and Ca<sup>2+</sup>), pH 7.4, 150 mM NaCl, 0.05% Sodium Azide and 40% glycerol

**Research Areas:** Epigenetics and Nuclear Signaling

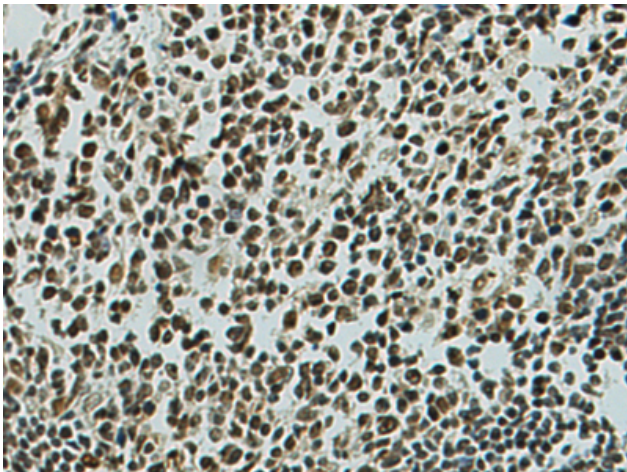
**Storage & Shipping:** Store at -20°C. Avoid repeated freezing and thawing



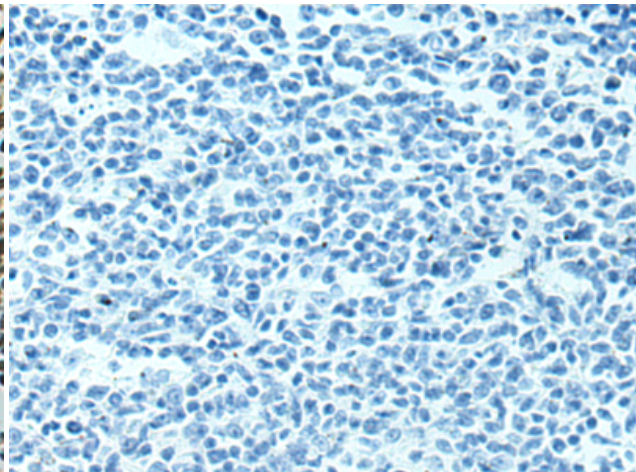
Immunohistochemistry analysis of paraffin embedded Human colorectal cancer tissue using 212551(FUBP3 Antibody) at a dilution of 1/140(Nucleus).



In comparison with the IHC on the left, the same paraffin-embedded Human colorectal cancer tissue is first treated with the fusion protein and then with 212551(Anti-FUBP3 Antibody) at dilution 1/140.



The image on the left is immunohistochemistry of paraffin-embedded Human tonsil tissue using 212551(Anti-FUBP3 Antibody) at a dilution of 1/140.



In comparison with the IHC on the left, the same paraffin-embedded Human tonsil tissue is first treated with fusion protein and then with D125373(Anti-FUBP3 Antibody) at dilution 1/140.