

FUCA2 RABBIT PAB

Cat.#: S219137

Product Name: Anti-FUCA2 Rabbit Polyclonal Antibody

Synonyms: dJ20N2.5

UNIPROT ID: Q9BTY2 (Gene Accession - BC003060)

Background: This gene encodes a plasma alpha-L-fucosidase, which represents 10-20% of the total cellular fucosidase activity. The protein is a member of the glycosyl hydrolase 29 family, and catalyzes the hydrolysis of the alpha-1,6-linked fucose joined to the reducing-end N-acetylglucosamine of the carbohydrate moieties of glycoproteins. This enzyme is essential for Helicobacter pylori adhesion to human gastric cancer cells.

Immunogen: Fusion protein of human FUCA2

Applications: ELISA, WB, IHC

Recommended Dilutions: IHC: 50-300;WB: 1000-5000;ELISA: 5000-10000

Host Species: Rabbit

Clonality: Rabbit Polyclonal

Isotype: Immunogen-specific rabbit IgG

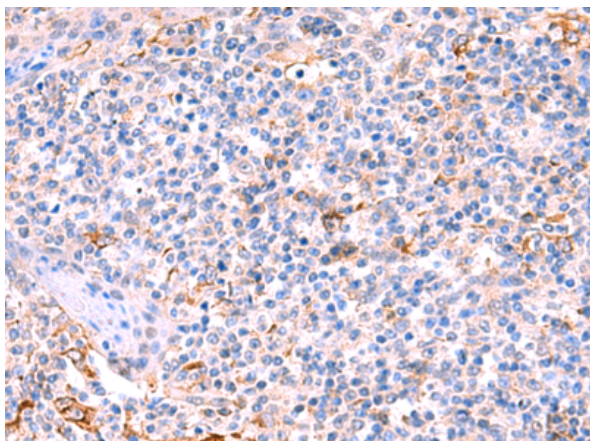
Purification: Antigen affinity purification

Species Reactivity: Human, Mouse, Rat

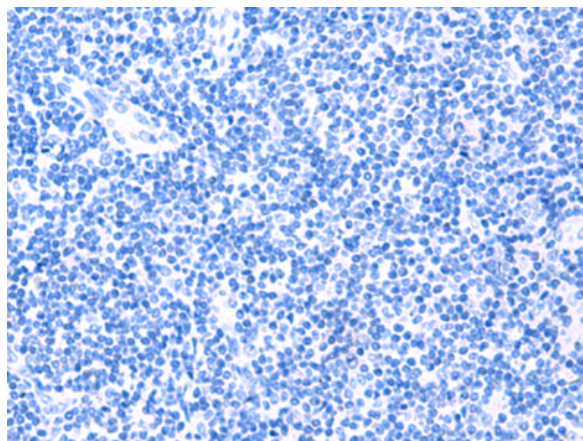
Constituents: PBS (without Mg²⁺ and Ca²⁺), pH 7.4, 150 mM NaCl, 0.05% Sodium Azide and 40% glycerol

Research Areas: Metabolism

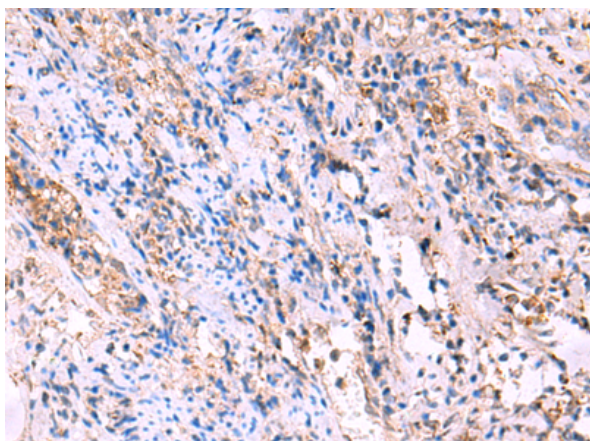
Storage & Shipping: Store at -20°C. Avoid repeated freezing and thawing



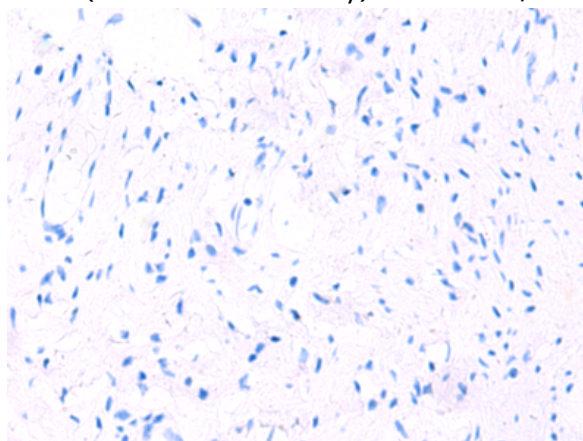
Immunohistochemistry analysis of paraffin embedded Human tonsil tissue using 219137(FUCA2 Antibody) at a dilution of 1/70(Cytoplasm).



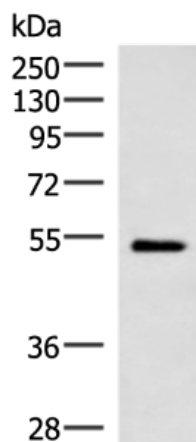
In comparison with the IHC on the left, the same paraffin-embedded Human tonsil tissue is first treated with the fusion protein and then with 219137(Anti-FUCA2 Antibody) at dilution 1/70.



The image on the left is immunohistochemistry of paraffin-embedded Human cervical cancer tissue using 219137(Anti-FUCA2 Antibody) at a dilution of 1/70.



In comparison with the IHC on the left, the same paraffin-embedded Human cervical cancer tissue is first treated with fusion protein and then with D225905(Anti-FUCA2 Antibody) at dilution 1/70.



Gel: 8%SDS-PAGE, Lysate: 40 µg;
 Lane: Mouse heart tissue lysate;
 Primary antibody: 219137(FUCA2 Antibody) at dilution 1/1000;
 Secondary antibody: HRP-conjugated Goat anti rabbit IgG at 1/5000 dilution;
 Exposure time: 1 minute



Product Description

Pioneering GTPase and Oncogene Product Development since 2010
