

## FUNDC1 RABBIT PAB

**Cat.#:** N225130

**Product Name:** Anti-FUNDC1 Rabbit pAb

**Synonyms:** FUNDC1; FUN14 domain-containing protein 1

**UNIPROT ID:** Q8IVP5

**Background:** Acts as an activator of hypoxia-induced mitophagy, an important mechanism for mitochondrial quality control.

**Immunogen:** The antiserum was produced against synthesized peptide derived from the N-terminal region of human FUNDC1. AA range:1-50

**Applications:** WB,ELISA

**Recommended Dilutions:** WB: 1/500-1/1000 ELISA: 1/10000

**Host Species:** Rabbit

**Clonality:** Rabbit Polyclonal

**Clone ID:** -

**MW:** Calculated MW: 17 kDa; Observed MW: 17 kDa

**Isotype:** IgG

**Purification:** Affinity Purified

**Species Reactivity:** Human,Mouse,Rat

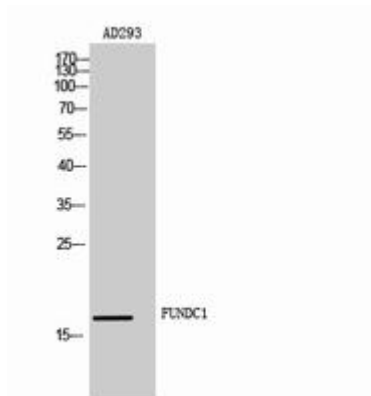
**Conjugation:** Unconjugated

**Modification:** Unmodified

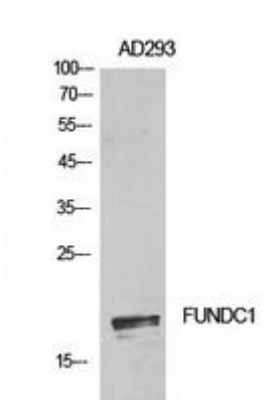
**Constituents:** PBS (without Mg<sup>2+</sup> and Ca<sup>2+</sup>), pH 7.3 containing 50% glycerol, 0.5% BSA and 0.02% sodium azide

**Research Areas:** Cell Biology

**Storage & Shipping:** Store at -20°C. Avoid repeated freezing and thawing



Western blot analysis of FUNDC1 in AD293 lysates using FUNDC1 antibody.



Western blot analysis of FUNDC1 in AD293 lysates using FUNDC1 antibody.