

FXR1 RABBIT MAB

Cat.#: N263337

Product Name: Anti-FXR1 Rabbit Monoclonal Antibody

Synonyms: FXR1; FXR1P; hFXR1p

UNIPROT ID: P51114

Background: RNA-binding protein required for embryonic and postnatal development of muscle tissue. May regulate intracellular transport and local translation of certain mRNAs.

Immunogen: A synthetic peptide of human FXR1

Applications: WB,IHC-F,IHC-P,ICC/IF

Recommended Dilutions: WB: 1/500-1/1000 IHC: 1/50-1/100 IF: 1/50-1/200

Host Species: Rabbit

Clonality: Rabbit Monoclonal

Clone ID: R03-011

MW: Calculated MW: 70 kDa; Observed MW: 70-80,82-84 kDa

Isotype: IgG

Purification: Affinity Purified

Species Reactivity: Human,Mouse,Rat

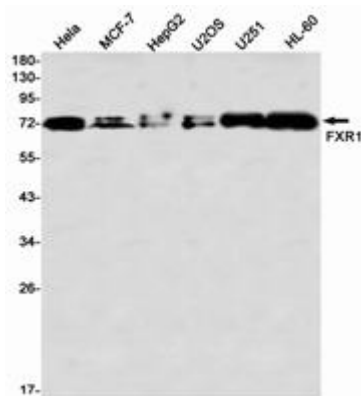
Conjugation: Unconjugated

Modification: Unmodified

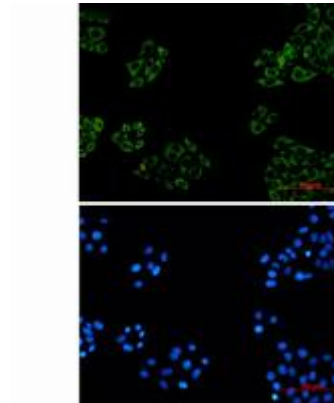
Constituents: PBS (without Mg²⁺ and Ca²⁺), pH 7.3 containing 50% glycerol, 0.5% BSA and 0.02% sodium azide

Research Areas: Immunology

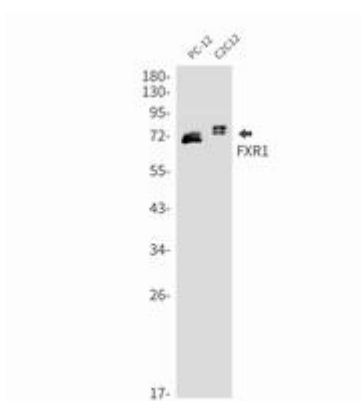
Storage & Shipping: Store at -20°C. Avoid repeated freezing and thawing



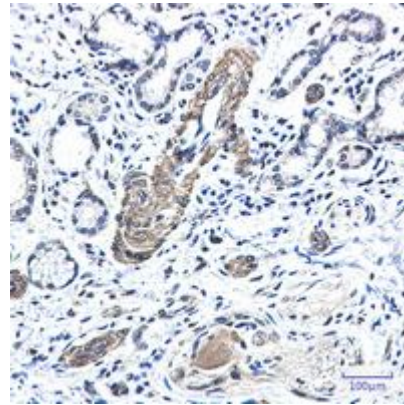
Western blot analysis of FXR1 in HeLa, MCF-7, HepG2, U2OS, U251, HL-60 lysates using FXR1 antibody



Immunocytochemistry analysis of FXR1 (green) in HeLa using FXR1 antibody, and DAPI (blue).



Western blot analysis of FXR1 in PC-12, C2C12 lysates using FXR1 antibody.



Immunohistochemistry analysis of paraffin-embedded Human lung cancer using FXR1 antibody. High-pressure and temperature Sodium Citrate pH 6.0 was used for antigen retrieval.