

FXR1 RABBIT PAB

Cat.#: S220560

Product Name: Anti-FXR1 Rabbit Polyclonal Antibody

Synonyms: FXRIP; MYOPMIL; MYORIBF

UNIPROT ID: P51114 (Gene Accession - NP_001013456)

Background: The protein encoded by this gene is an RNA binding protein that interacts with the functionally-similar proteins FMR1 and FXR2. These proteins shuttle between the nucleus and cytoplasm and associate with polyribosomes, predominantly with the 60S ribosomal subunit. Three transcript variants encoding different isoforms have been found for this gene. [provided by RefSeq, Jul 2008]

Immunogen: Synthetic peptide of human FXR1

Applications: ELISA, IHC

Recommended Dilutions: IHC: 50-200; ELISA: 5000-10000

Host Species: Rabbit

Clonality: Rabbit Polyclonal

Isotype: Immunogen-specific rabbit IgG

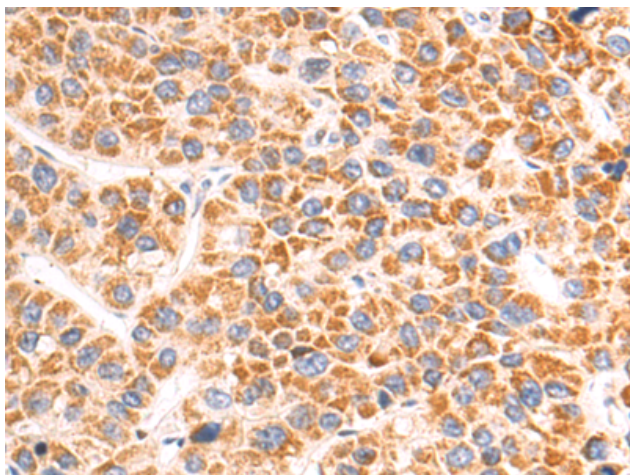
Purification: Antigen affinity purification

Species Reactivity: Human, Mouse, Rat

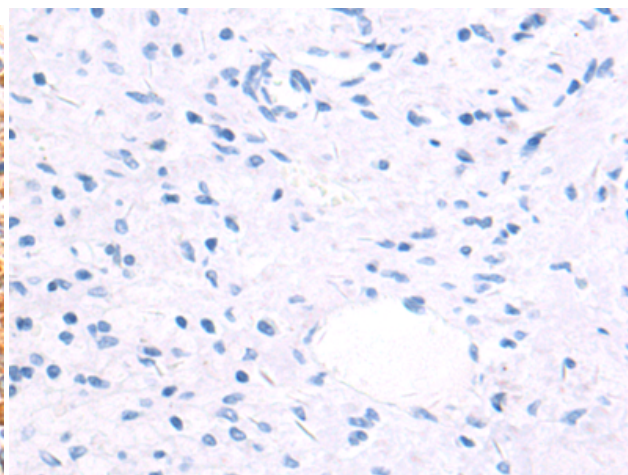
Constituents: PBS (without Mg²⁺ and Ca²⁺), pH 7.4, 150 mM NaCl, 0.05% Sodium Azide and 40% glycerol

Research Areas: Epigenetics and Nuclear Signaling, Immunology

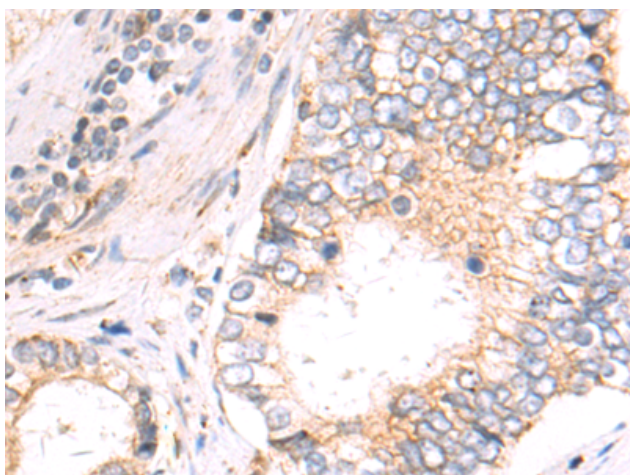
Storage & Shipping: Store at -20°C. Avoid repeated freezing and thawing



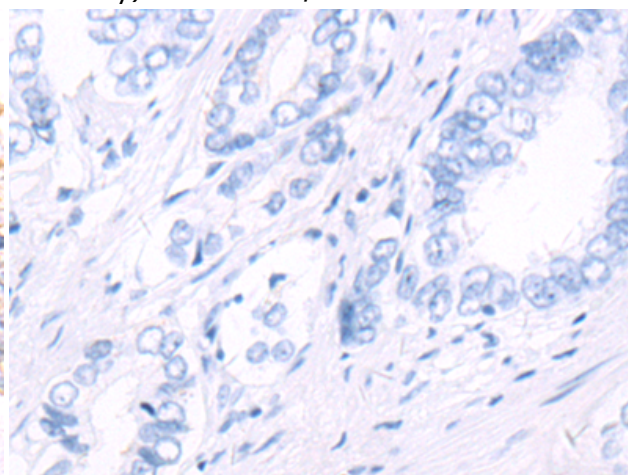
Immunohistochemistry analysis of paraffin embedded Human liver cancer tissue using 220560(FXR1 Antibody) at a dilution of 1/50(Cytoplasm).



In comparison with the IHC on the left, the same paraffin-embedded Human liver cancer tissue is first treated with the synthetic peptide and then with 220560(Anti-FXR1 Antibody) at dilution 1/50.



The image on the left is immunohistochemistry of paraffin-embedded Human prostate cancer tissue using 220560(Anti-FXR1 Antibody) at a dilution of 1/50.



In comparison with the IHC on the left, the same paraffin-embedded Human prostate cancer tissue is first treated with synthetic peptide and then with D261694(Anti-FXR1 Antibody) at dilution 1/50.