

## FYCO1 RABBIT PAB

**Cat.#:** S219292

**Product Name:** Anti-FYCO1 Rabbit Polyclonal Antibody

**Synonyms:** CATC2; RUFY3; ZFYVE7; CTRCT18

**UNIPROT ID:** Q9BQS8 (Gene Accession - BC007218 )

**Background:** This gene encodes a protein that contains a RUN domain, FYVE-type zinc finger domain and Golgi dynamics (GOLD) domain. The encoded protein plays a role in microtubule plus end-directed transport of autophagic vesicles through interactions with the small GTPase Rab7, phosphatidylinositol-3-phosphate (PI3P) and the autophagosome marker LC3. Mutations in this gene are a cause of autosomal recessive congenital cataract-2 (CATC2).

**Immunogen:** Fusion protein of human FYCO1

**Applications:** ELISA, IHC

**Recommended Dilutions:** IHC: 100-200; ELISA: 5000-10000

**Host Species:** Rabbit

**Clonality:** Rabbit Polyclonal

**Isotype:** Immunogen-specific rabbit IgG

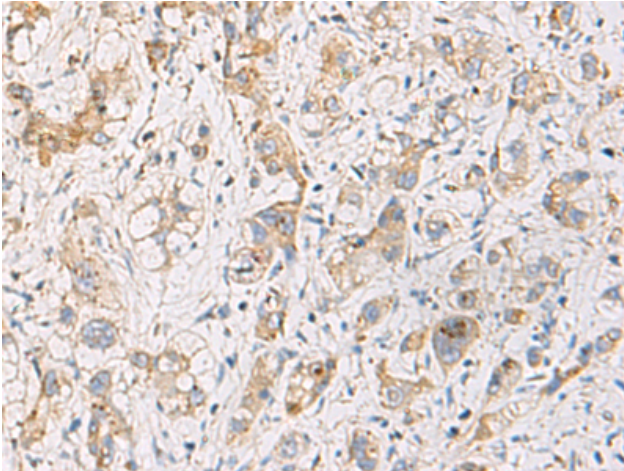
**Purification:** Antigen affinity purification

**Species Reactivity:** Human

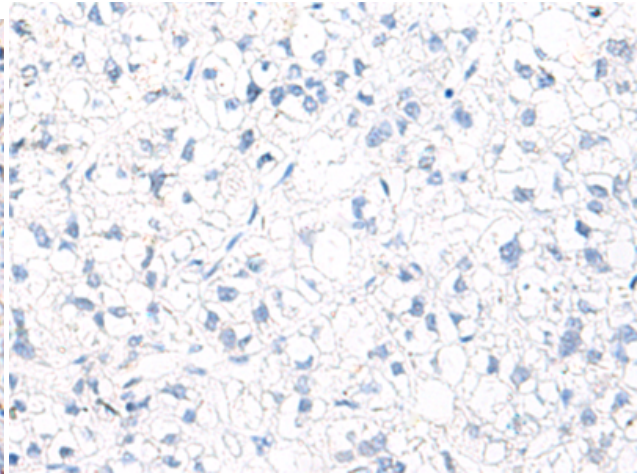
**Constituents:** PBS (without Mg<sup>2+</sup> and Ca<sup>2+</sup>), pH 7.4, 150 mM NaCl, 0.05% Sodium Azide and 40% glycerol

**Research Areas:** Epigenetics and Nuclear Signaling

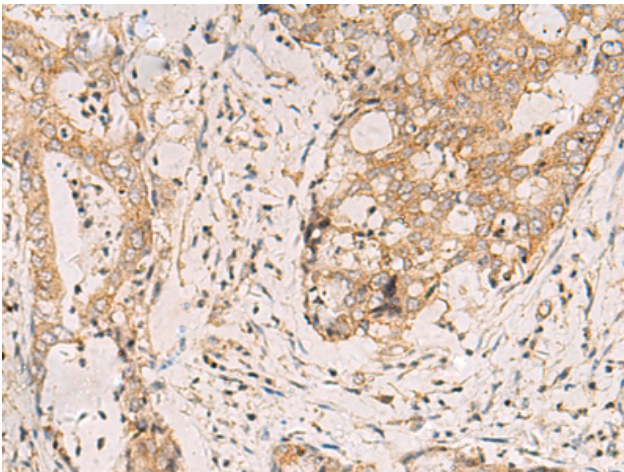
**Storage & Shipping:** Store at -20°C. Avoid repeated freezing and thawing



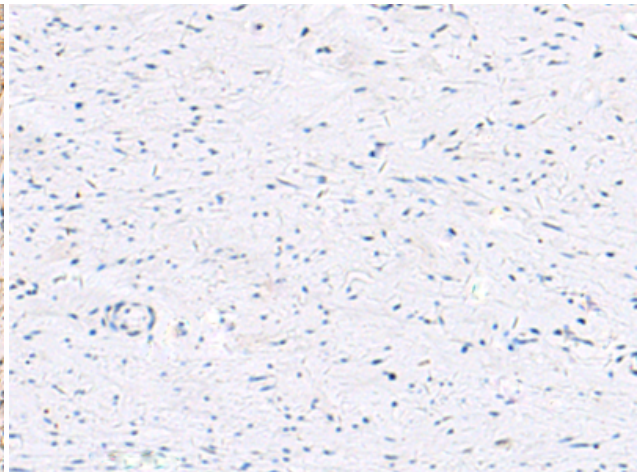
Immunohistochemistry analysis of paraffin embedded Human liver cancer tissue using 219292(FYCO1 Antibody) at a dilution of 1/110(Cytoplasm).



In comparison with the IHC on the left, the same paraffin-embedded Human liver cancer tissue is first treated with the fusion protein and then with 219292(Anti-FYCO1 Antibody) at dilution 1/110.



The image on the left is immunohistochemistry of paraffin-embedded Human cervical cancer tissue using 219292(Anti-FYCO1 Antibody) at a dilution of 1/110.



In comparison with the IHC on the left, the same paraffin-embedded Human cervical cancer tissue is first treated with fusion protein and then with D226224(Anti-FYCO1 Antibody) at dilution 1/110.