

FZD2 RABBIT PAB

Cat.#: S213774

Product Name: Anti-FZD2 Rabbit Polyclonal Antibody

Synonyms: Fz2; fz-2; fzE2; hFz2

UNIPROT ID: Q14332 (Gene Accession - NP_001457.1)

Background: This intronless gene is a member of the frizzled gene family. Members of this family encode seven-transmembrane domain proteins that are receptors for the wntless type MMTV integration site family of signaling proteins. This gene encodes a protein that is coupled to the beta-catenin canonical signaling pathway. Competition between the wntless-type MMTV integration site family, member 3A and wntless-type MMTV integration site family, member 5A gene products for binding of this protein is thought to regulate the beta-catenin-dependent and -independent pathways.

Immunogen: Synthetic peptide of human FZD2

Applications: ELISA, IHC

Recommended Dilutions: IHC: 25-100; ELISA: 1000-5000

Host Species: Rabbit

Clonality: Rabbit Polyclonal

Isotype: Immunogen-specific rabbit IgG

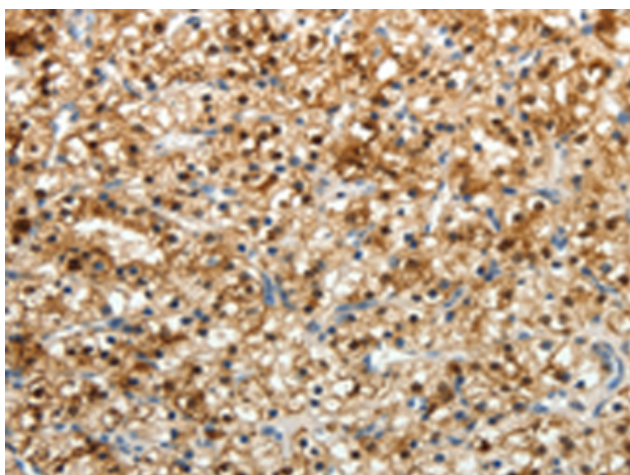
Purification: Antigen affinity purification

Species Reactivity: Human, Mouse, Rat

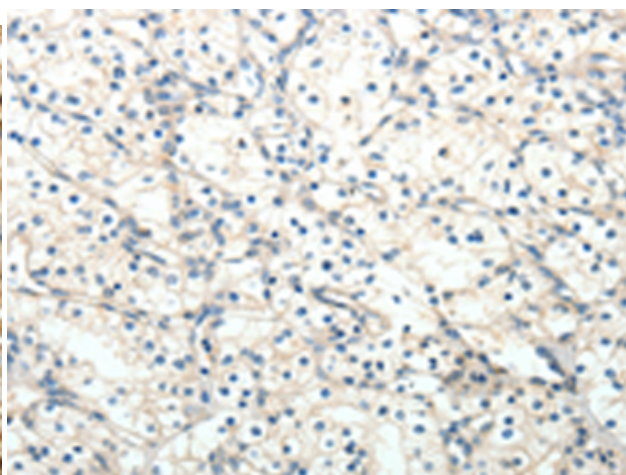
Constituents: PBS (without Mg²⁺ and Ca²⁺), pH 7.4, 150 mM NaCl, 0.05% Sodium Azide and 40% glycerol

Research Areas: Signal Transduction

Storage & Shipping: Store at -20°C. Avoid repeated freezing and thawing



Immunohistochemistry analysis of paraffin embedded Human renal cancer tissue using 213774(FZD2 Antibody) at a dilution of 1/25(Cytoplasm, Cell membrane).



In comparison with the IHC on the left, the same paraffin-embedded Human renal cancer tissue is first treated with the synthetic peptide and then with 213774(Anti-FZD2 Antibody) at dilution 1/25.