

GAB4 RABBIT PAB

Cat.#: S222056

Product Name: Anti-GAB4 Rabbit Polyclonal Antibody

Synonyms:

UNIPROT ID: Q2WGN9 (Gene Accession - NP_001032903)

Background: The function of this protein remains unknown.

Immunogen: Synthetic peptide of human GAB4

Applications: ELISA, WB, IHC

Recommended Dilutions: IHC: 25-50;WB: 200-1000;ELISA: 5000-10000

Host Species: Rabbit

Clonality: Rabbit Polyclonal

Isotype: Immunogen-specific rabbit IgG

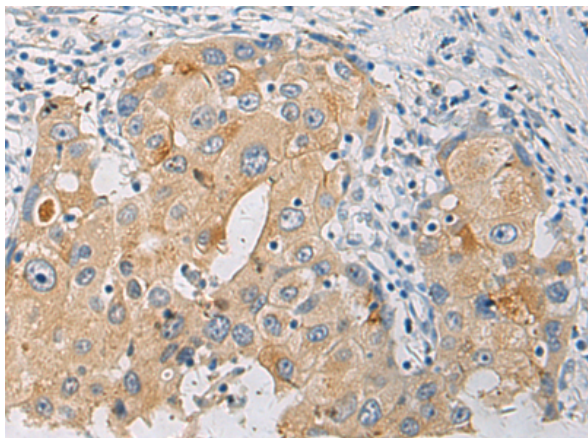
Purification: Antigen affinity purification

Species Reactivity: Human

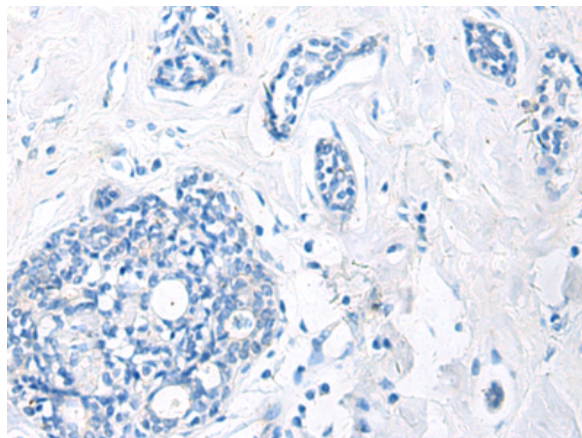
Constituents: PBS (without Mg²⁺ and Ca²⁺), pH 7.4, 150 mM NaCl, 0.05% Sodium Azide and 40% glycerol

Research Areas: Cell Biology

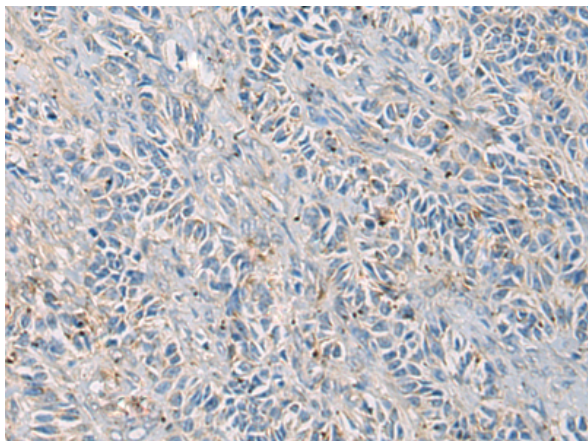
Storage & Shipping: Store at -20°C. Avoid repeated freezing and thawing



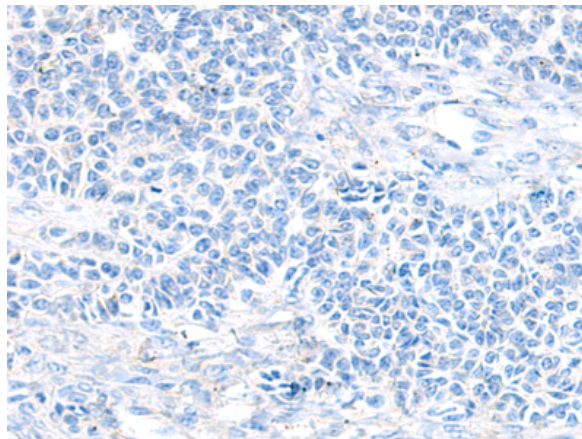
Immunohistochemistry analysis of paraffin embedded Human breast cancer tissue using 222056(GAB4 Antibody) at a dilution of 1/25(Cytoplasm).



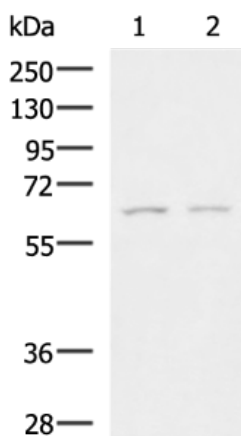
In comparison with the IHC on the left, the same paraffin-embedded Human breast cancer tissue is first treated with the synthetic peptide and then with 222056(Anti-GAB4 Antibody) at dilution 1/25.



The image on the left is immunohistochemistry of paraffin-embedded Human ovarian cancer tissue using 222056(Anti-GAB4 Antibody) at a dilution of 1/25.



In comparison with the IHC on the left, the same paraffin-embedded Human ovarian cancer tissue is first treated with synthetic peptide and then with D263954(Anti-GAB4 Antibody) at dilution 1/25.



Gel: 8%SDS-PAGE, Lysate: 40 µg;
 Lane 1-2: SKOV3 and LOVO cell lysates;
 Primary antibody: 222056(GAB4 Antibody) at dilution 1/650;
 Secondary antibody: HRP-conjugated Goat anti rabbit IgG at 1/5000 dilution;
 Exposure time: 5 minutes



Product Description

Pioneering GTPase and Oncogene Product Development since 2010
