

GABPB2 RABBIT PAB

Cat.#: S217462

Product Name: Anti-GABPB2 Rabbit Polyclonal Antibody

Synonyms: GABPB-2

UNIPROT ID: Q8TAK5 (Gene Accession - BC027033)

Background: Enables transcription cis-regulatory region binding activity. Acts upstream of or within positive regulation of transcription by RNA polymerase II. Located in nucleus. [provided by Alliance of Genome Resources, Apr 2022]

Immunogen: Fusion protein of human GABPB2

Applications: ELISA, IHC

Recommended Dilutions: IHC: 150-300; ELISA: 5000-10000

Host Species: Rabbit

Clonality: Rabbit Polyclonal

Isotype: Immunogen-specific rabbit IgG

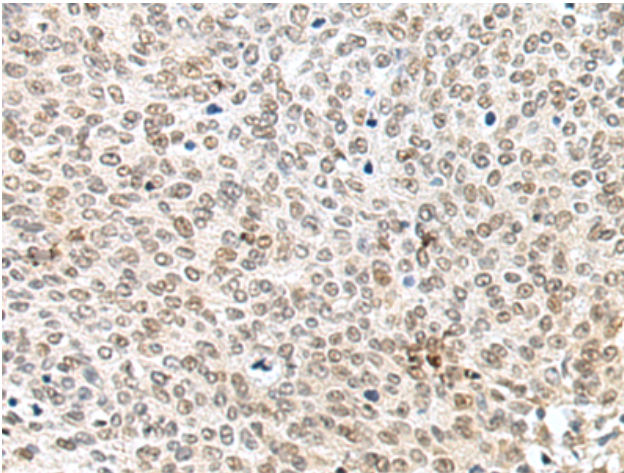
Purification: Antigen affinity purification

Species Reactivity: Human, Mouse

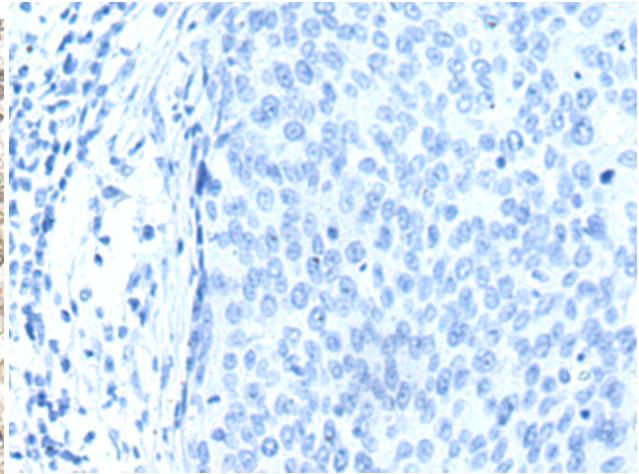
Constituents: PBS (without Mg²⁺ and Ca²⁺), pH 7.4, 150 mM NaCl, 0.05% Sodium Azide and 40% glycerol

Research Areas: Epigenetics and Nuclear Signaling

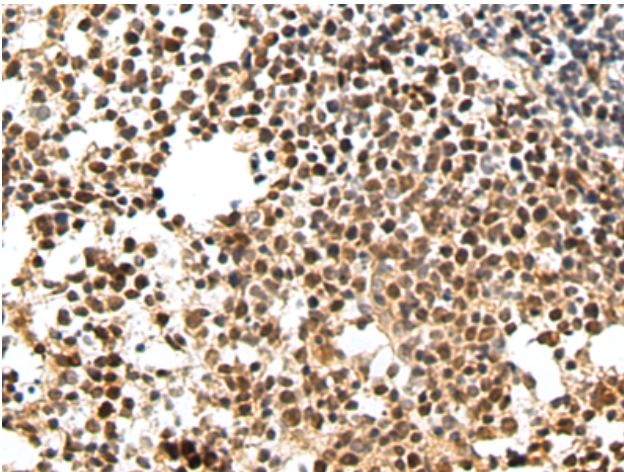
Storage & Shipping: Store at -20°C. Avoid repeated freezing and thawing



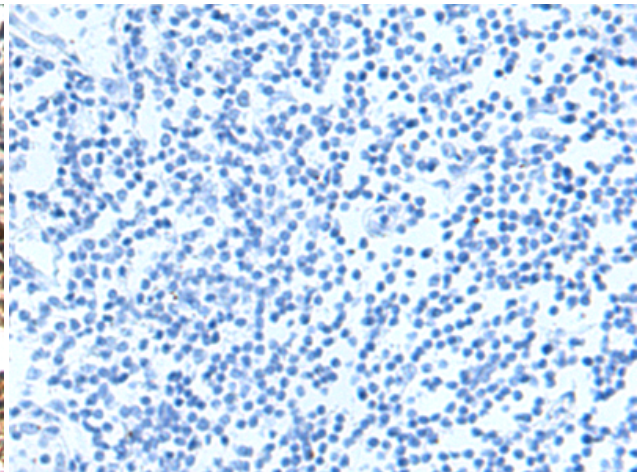
Immunohistochemistry analysis of paraffin embedded Human cervical cancer tissue using 217462(GABPB2 Antibody) at a dilution of 1/140(Cytoplasm and Nucleus).



In comparison with the IHC on the left, the same paraffin-embedded Human cervical cancer tissue is first treated with the fusion protein and then with 217462(Anti-GABPB2 Antibody) at dilution 1/140.



The image on the left is immunohistochemistry of paraffin-embedded Human tonsil tissue using 217462(Anti-GABPB2 Antibody) at a dilution of 1/140.



In comparison with the IHC on the left, the same paraffin-embedded Human tonsil tissue is first treated with fusion protein and then with D222395(Anti-GABPB2 Antibody) at dilution 1/140.