

## GAD1 RABBIT PAB

**Cat.#:** S220221

**Product Name:** Anti-GAD1 Rabbit Polyclonal Antibody

**Synonyms:** GAD; SCP; CPSQ1; DEE89

**UNIPROT ID:** Q99259 (Gene Accession - NP\_000808 )

**Background:** This gene encodes one of several forms of glutamic acid decarboxylase, identified as a major autoantigen in insulin-dependent diabetes. The enzyme encoded is responsible for catalyzing the production of gamma-aminobutyric acid from L-glutamic acid. A pathogenic role for this enzyme has been identified in the human pancreas since it has been identified as an autoantigen and an autoreactive T cell target in insulin-dependent diabetes. This gene may also play a role in the stiff man syndrome. Deficiency in this enzyme has been shown to lead to pyridoxine dependency with seizures. Alternative splicing of this gene results in two products, the predominant 67-kD form and a less-frequent 25-kD form.

**Immunogen:** Synthetic peptide of human GAD1

**Applications:** ELISA, WB, IHC

**Recommended Dilutions:** IHC: 50-100;WB: 500-2000;ELISA: 5000-10000

**Host Species:** Rabbit

**Clonality:** Rabbit Polyclonal

**Isotype:** Immunogen-specific rabbit IgG

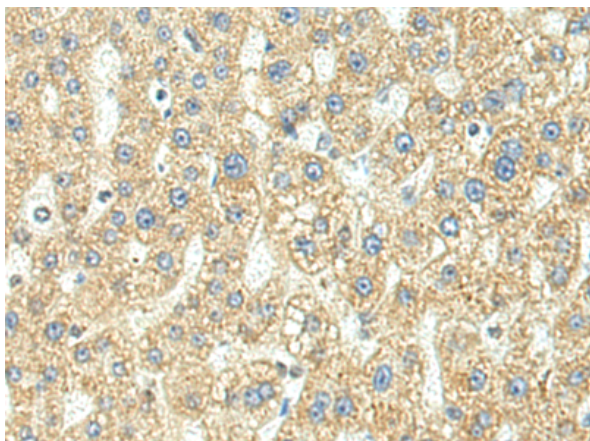
**Purification:** Antigen affinity purification

**Species Reactivity:** Human, Mouse, Rat

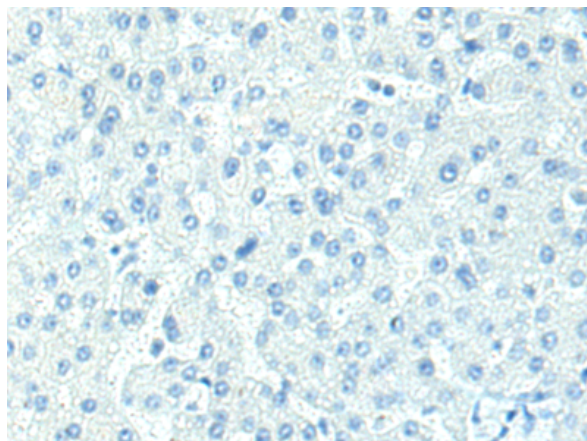
**Constituents:** PBS (without Mg<sup>2+</sup> and Ca<sup>2+</sup>), pH 7.4, 150 mM NaCl, 0.05% Sodium Azide and 40% glycerol

**Research Areas:** Metabolism, Neuroscience, Immunology

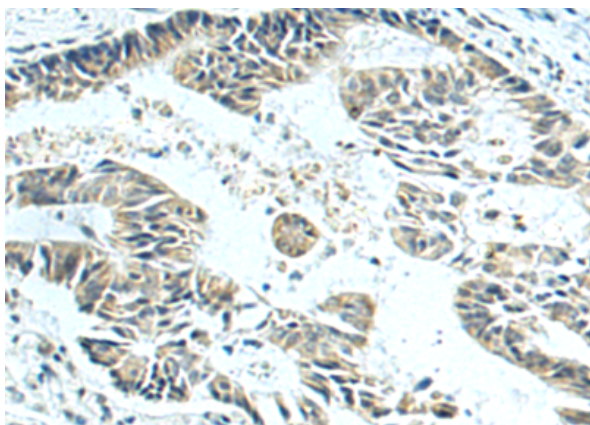
**Storage & Shipping:** Store at -20°C. Avoid repeated freezing and thawing



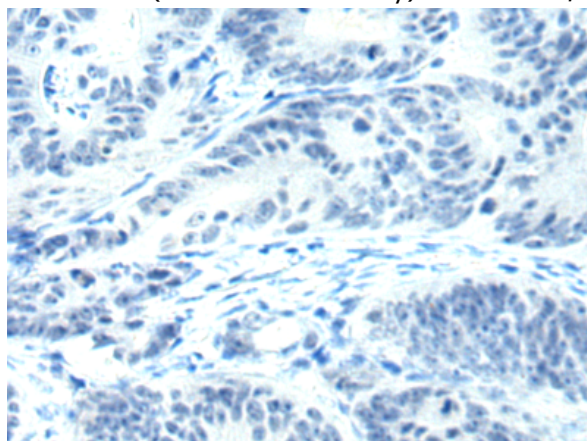
Immunohistochemistry analysis of paraffin embedded Human liver cancer tissue using 220221(GAD1 Antibody) at a dilution of 1/30(Cytoplasm and Cell membrane).



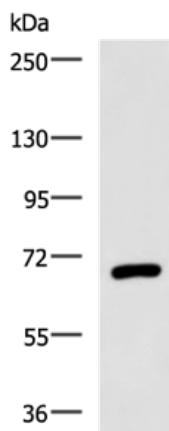
In comparison with the IHC on the left, the same paraffin-embedded Human liver cancer tissue is first treated with the synthetic peptide and then with 220221(Anti-GAD1 Antibody) at dilution 1/30.



The image on the left is immunohistochemistry of paraffin-embedded Human colorectal cancer tissue using 220221(Anti-GAD1 Antibody) at a dilution of 1/30.



In comparison with the IHC on the left, the same paraffin-embedded Human colorectal cancer tissue is first treated with synthetic peptide and then with D261161(Anti-GAD1 Antibody) at dilution 1/30.



Gel: 6%SDS-PAGE, Lysate: 40 µg;  
 Lane: A172 cell lysate;  
 Primary antibody: 220221(GAD1 Antibody) at dilution 1/700;  
 Secondary antibody: HRP-conjugated Goat anti rabbit IgG at 1/5000 dilution;  
 Exposure time: 2 minutes



# Product Description

Pioneering GTPase and Oncogene Product Development since 2010

---