

GADL1 RABBIT PAB

Cat.#: S215821

Product Name: Anti-GADL1 Rabbit Polyclonal Antibody

Synonyms: ADC; CSADC; HuADC; HuCSADC

UNIPROT ID: Q6ZQY3 (Gene Accession - NP_997242)

Background: May catalyze the decarboxylation of aspartate, cysteine sulfinic acid, and cysteic acid to beta-alanine, hypotaurine and taurine, respectively. Does not exhibit any decarboxylation activity toward glutamate.

Immunogen: Synthetic peptide of human GADL1

Applications: ELISA, WB, IHC

Recommended Dilutions: IHC: 30-150;WB: 200-1000;ELISA: 5000-10000

Host Species: Rabbit

Clonality: Rabbit Polyclonal

Isotype: Immunogen-specific rabbit IgG

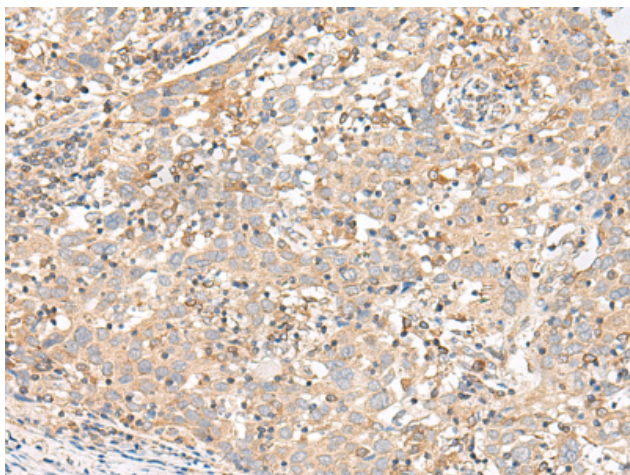
Purification: Antigen affinity purification

Species Reactivity: Human, Mouse

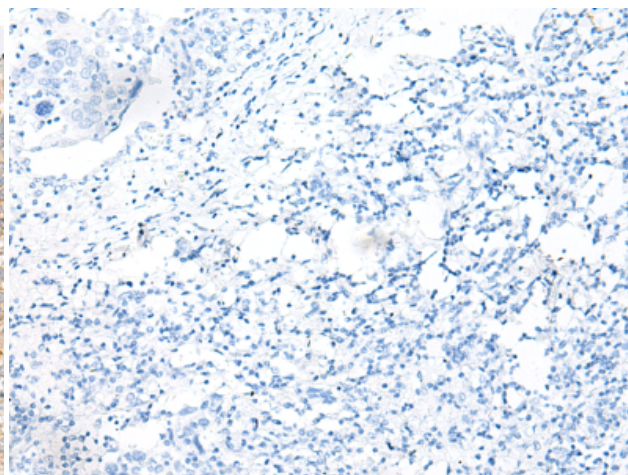
Constituents: PBS (without Mg²⁺ and Ca²⁺), pH 7.4, 150 mM NaCl, 0.05% Sodium Azide and 40% glycerol

Research Areas: Metabolism

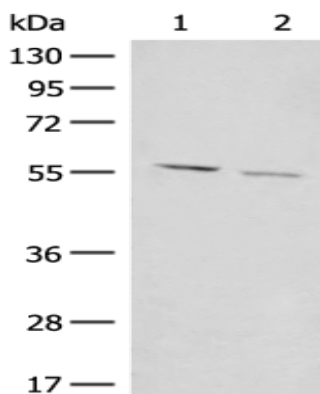
Storage & Shipping: Store at -20°C. Avoid repeated freezing and thawing



Immunohistochemistry analysis of paraffin embedded Human cervical cancer tissue using 215821(GADL1 Antibody) at a dilution of 1/30(Cytoplasm).



In comparison with the IHC on the left, the same paraffin-embedded Human cervical cancer tissue is first treated with the synthetic peptide and then with 215821(Anti-GADL1 Antibody) at dilution 1/30.



Gel: 8%SDS-PAGE, Lysate: 40 μ g;
 Lane 1-2: 293T and K562 cell lysates;
 Primary antibody: 215821(GADL1 Antibody) at dilution 1/300;
 Secondary antibody: Goat anti rabbit IgG at 1/8000 dilution;
 Exposure time: 10 seconds