

GALECTIN 3 (4B2) MOUSE MAB

Cat.#: N261209

Product Name: Anti-Galectin 3 (4B2) Mouse Monoclonal Antibody

Synonyms: LGALS3

UNIPROT ID: P17931

Background: Galactose-specific lectin which binds IgE. May mediate with the alpha-3, beta-1 integrin the stimulation by CSPG4 of endothelial cells migration. Together with DMBT1, required for terminal differentiation of columnar epithelial cells during early embryogenesis.

Immunogen: Synthetic Peptide of Galectin-3

Applications: WB,IHC-F,IHC-P,ICC/IF

Recommended Dilutions: WB: 1/500-1/1000 IHC: 1/50-1/100 IF: 1/50-1/200

Host Species: Mouse

Clonality: Mouse Monoclonal

Clone ID: 4B2-7G2-8B9

MW: Calculated MW: 26 kDa; Observed MW: 26 kDa

Isotype: IgG1

Purification: Affinity Purified

Species Reactivity: Human,Mouse

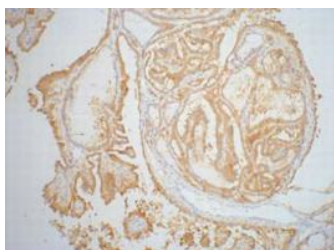
Conjugation: Unconjugated

Modification: Unmodified

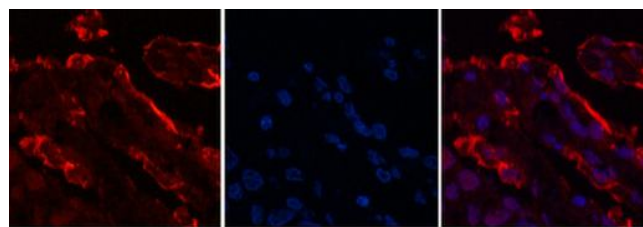
Constituents: PBS (without Mg²⁺ and Ca²⁺), pH 7.3 containing 50% glycerol, 0.5% BSA and 0.02% sodium azide

Research Areas: Neuroscience

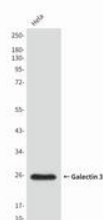
Storage & Shipping: Store at -20°C. Avoid repeated freezing and thawing



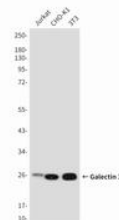
Immunohistochemistry analysis of paraffin-embedded Human thyroid tissue using Galectin 3 (4B2) antibody. High-pressure and temperature Sodium Citrate pH 6.0 was used for antigen retrieval.



Immunofluorescence analysis of Galectin 3 (4B2) in Human lungcancer tissue using Galectin 3 (4B2) antibody (red), and DAPI (blue).



Western blot analysis of Galectin 3 (4B2) in HeLa lysates using Galectin 3 (4B2) antibody



Western blot analysis of Galectin 3 (4B2) in Jurkat, CHO-K1, 3T3 lysates using Galectin 3 (4B2) antibody.