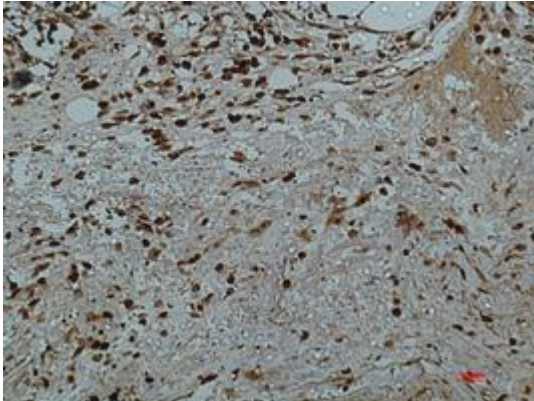
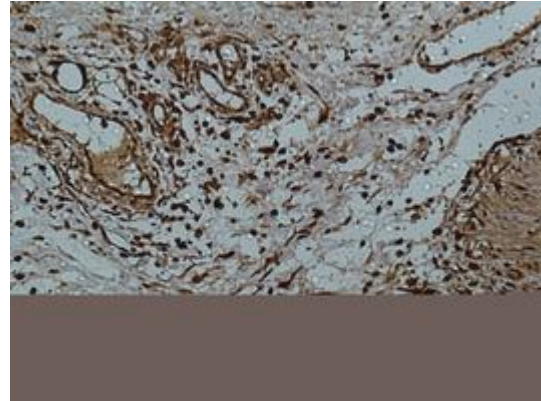


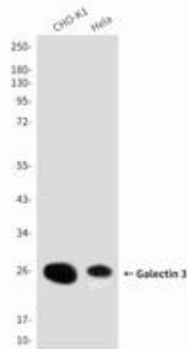
**GALECTIN 3 (7G9) MOUSE MAB****Cat.#:** N261388**Product Name:** Anti-Galectin 3 (7G9) Mouse Monoclonal Antibody**Synonyms:** LGALS3**UNIPROT ID:** P17931**Background:** Galactose-specific lectin which binds IgE. May mediate with the alpha-3, beta-1 integrin the stimulation by CSPG4 of endothelial cells migration. Together with DMBT1, required for terminal differentiation of columnar epithelial cells during early embryogenesis.**Immunogen:** Purified recombinant protein expressed in E.coli.**Applications:** WB,IHC-P,ELISA**Recommended Dilutions:** WB: 1/500-1/1000 IHC: 1/50-1/100 ELISA: 1/10000**Host Species:** Mouse**Clonality:** Mouse Monoclonal**Clone ID:** 7G9-1C9-7B4**MW:** Calculated MW: 26 kDa; Observed MW: 26 kDa**Isotype:** IgG1**Purification:** Affinity Purified**Species Reactivity:** Human,Mouse**Conjugation:** Unconjugated**Modification:** Unmodified**Constituents:** PBS (without Mg<sup>2+</sup> and Ca<sup>2+</sup>), pH 7.3 containing 50% glycerol, 0.5% BSA and 0.02% sodium azide**Research Areas:** Neuroscience**Storage & Shipping:** Store at -20°C. Avoid repeated freezing and thawing



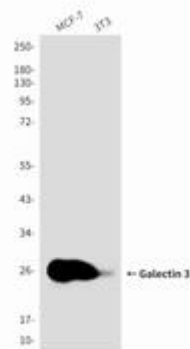
Immunohistochemical analysis of paraffin-embedded Human tonsils using Galectin 3 (7G9) antibody. High-pressure and temperature Sodium Citrate pH 6.0 was used for antigen retrieval.



Immunohistochemistry analysis of paraffin-embedded Human colon using Galectin 3 (7G9) antibody. High-pressure and temperature Sodium Citrate pH 6.0 was used for antigen retrieval.



Western blot analysis of Galectin 3 (7G9) in CHO-K1, HeLa lysates using Galectin 3 (7G9) antibody



Western blot analysis of Galectin 3 (7G9) in MCF-7, 3T3 lysates using Galectin 3 (7G9) antibody.