

## GALECTIN 3 RABBIT MAB

**Cat.#:** N262257

**Product Name:** Anti-Galectin 3 Rabbit Monoclonal Antibody

**Synonyms:** LGALS3

**UNIPROT ID:** P17931

**Background:** Galactose-specific lectin which binds IgE. May mediate with the alpha-3, beta-1 integrin the stimulation by CSPG4 of endothelial cells migration. Together with DMBT1, required for terminal differentiation of columnar epithelial cells during early embryogenesis.

**Immunogen:** A synthetic peptide of human Galectin 3

**Applications:** WB, ICC/IF

**Recommended Dilutions:** WB: 1/500-1/1000 IF: 1/50-1/200

**Host Species:** Rabbit

**Clonality:** Rabbit Monoclonal

**Clone ID:** R09-9A5

**MW:** Calculated MW: 26 kDa; Observed MW: 26 kDa

**Isotype:** IgG

**Purification:** Affinity Purified

**Species Reactivity:** Human, Rat, Monkey

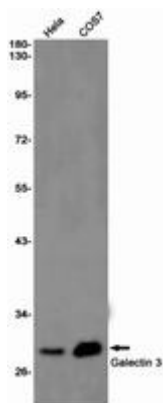
**Conjugation:** Unconjugated

**Modification:** Unmodified

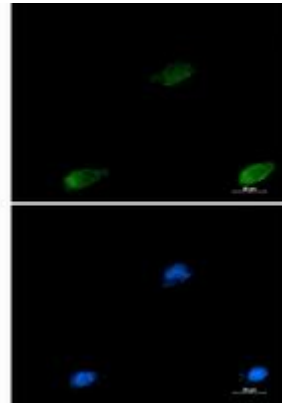
**Constituents:** PBS (without Mg<sup>2+</sup> and Ca<sup>2+</sup>), pH 7.3 containing 50% glycerol, 0.5% BSA and 0.02% sodium azide

**Research Areas:** Neuroscience

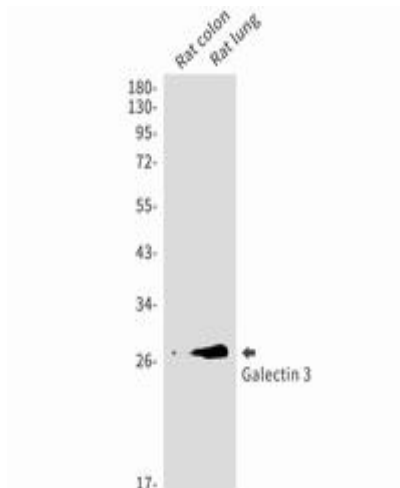
**Storage & Shipping:** Store at -20°C. Avoid repeated freezing and thawing



Western blot analysis of Galectin 3 in HeLa, COS7 lysates using Galectin 3 antibody



Immunocytochemistry analysis of Galectin 3 (green) in U87-MG using Galectin 3 antibody, and DAPI (blue).



Western blot analysis of Galectin 3 in rat colon, rat lung lysates using Galectin 3 antibody.