

GALM RABBIT PAB

Cat.#: S219336

Product Name: Anti-GALM Rabbit Polyclonal Antibody

Synonyms: GLAT; IBD1; BLOCK25; HEL-S-63p

UNIPROT ID: Q96C23 (Gene Accession - BC014916)

Background: This gene encodes an enzyme that catalyzes the epimerization of hexose sugars such as glucose and galactose. The encoded protein is expressed in the cytoplasm and has a preference for galactose. The encoded protein may be required for normal galactose metabolism by maintaining the equilibrium of alpha and beta anomers of galactose.

Immunogen: Fusion protein of human GALM

Applications: ELISA, WB, IHC

Recommended Dilutions: IHC: 50-100;WB: 500-2000;ELISA: 5000-10000

Host Species: Rabbit

Clonality: Rabbit Polyclonal

Isotype: Immunogen-specific rabbit IgG

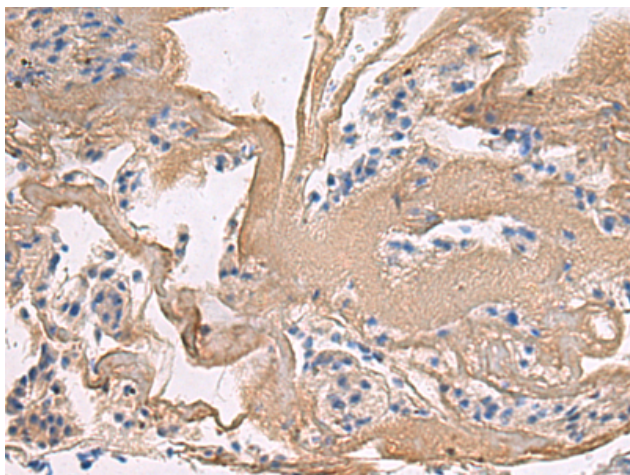
Purification: Antigen affinity purification

Species Reactivity: Human, Mouse, Rat

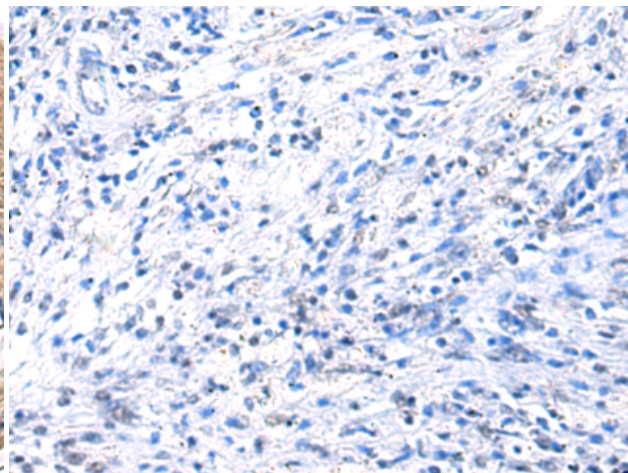
Constituents: PBS (without Mg^{2+} and Ca^{2+}), pH 7.4, 150 mM NaCl, 0.05% Sodium Azide and 40% glycerol

Research Areas: Metabolism

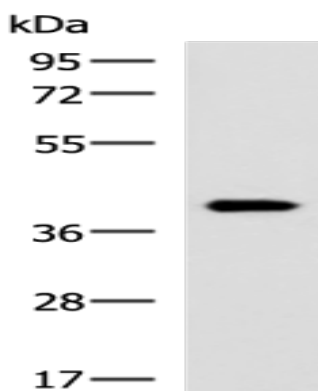
Storage & Shipping: Store at $-20^{\circ}C$. Avoid repeated freezing and thawing



Immunohistochemistry analysis of paraffin embedded Human brain tissue using 219336(GALM Antibody) at a dilution of 1/35(Cytoplasm).



In comparison with the IHC on the left, the same paraffin-embedded Human brain tissue is first treated with the fusion protein and then with 219336(Anti-GALM Antibody) at dilution 1/35.



Gel: 8%SDS-PAGE, Lysate: 40 µg;
Lane: Rat kidney tissue lysate;
Primary antibody: 219336(GALM Antibody) at dilution 1/500;
Secondary antibody: HRP-conjugated Goat anti rabbit IgG at 1/5000 dilution;
Exposure time: 10 seconds